

LGMG

T38J-H

TELESCOPIC BOOM LIFT



- Equipped with X-type leg expansion structure, and adopting magnetostrictive displacement sensor to realize high-accurate, simple and reliable control.
- Adopt three steering modes: front-wheel, crab and pivot steering, to meet the demand of operations in narrow space.
- Four synchronous telescopic booms, improving efficiency by over 30% than that of two-cylinder drive boom telescopic mode.



LGMG Diesel Telescopic Boom Lift

SPECIFICATIONS

MODELS	T38J-H (T125J-H)	
Measurements	Metric	Imperial
Work Height Max.	40.2m	131'11"
Platform Height Max.	38.2m	125'4"
Horizontal Outreach Max.	23.5m	77'1"
Platform Length	2.44m	8'
Platform Width	0.9m	2'11"
A Stowed Length	14.31m	46'11"
Length-Transport (jib tucked)	12.42m	40'9"
B Overall Width (outriggers stowed)	2.49m	8'2"
C Overall Width (outriggers radius)	4.01m	13'2"
D Stowed Height	2.89m	9'6"
Height-Transport	2.92m	9'7"
E Wheelbase	4.12m	13'6"
F Ground Clearance	0.34m	1'1"

PRODUCTIVITY	
Max. Platform Occupants	2 (unrestricted) / 3 (restricted)
Platform Capacity (unrestricted)	300kg / 661 lbs
Platform Capacity (restricted)	450kg / 992 lbs
Turntable Rotation	360°Continuous
Drive Speed-Stowed	5km/h / 3.1mph
Drive Speed-Raised	0.6km/h / 0.37mph
Gradeability	45% / 45%
Max. Wind Speed	12.5m/s / 28mph
Turning Radius-Inside (outriggers stowed)	6.6m / 21'8"
Turning Radius-Outside (outriggers stowed)	9.1m / 29'10"
Turning Radius-Inside (outriggers radius)	2.9m / 9'6"
Turning Radius-Outside (outriggers radius)	6.7m / 22'
Max.Slope	5°/5°
Tire Type	Foam filled
Tire Size	445/50D 710

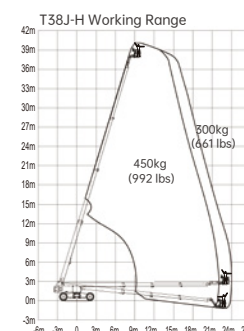
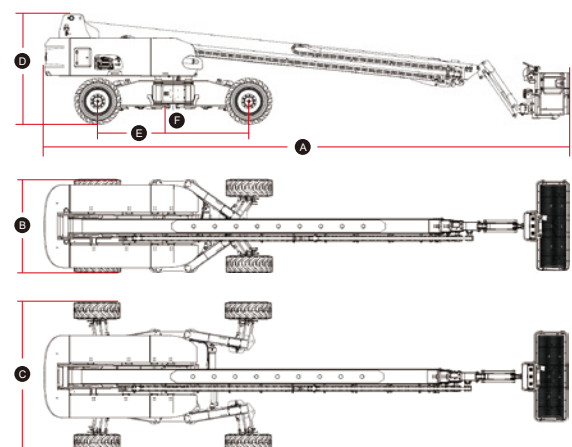
POWER	
Power Source	Kubota 54.6kw/73.2hp
Fuel Tank Capacity	150 L / 39.6 gal

HYDRAULIC SYSTEM	
Hydraulic Oil Volume	220 L / 58.1 gal

WEIGHT	
Machine Weight	20,700 kg / 45,635 lbs

STANDARD FEATURES	
Proportional control	Emergency stop button
Horn/Hour meter	Auto-leveling platform
Platform control cover	Anti-collision protection
Flashing beacons	Over-tilt protection system
Cylinder bellows	Overload sensing system
Platform tool box	Intelligent diagnostic system
Oscillating axle	Descent alarm with flashing beacon
Telematics connector	Foam-filled tires
Extendable axles	

OPTIONAL	
Telematics	Foam-filled non-marking tires
Glazier kit	Half-height mesh platform
Auxiliary rail	AC power to platform
Hydraulic generator kit	3.5kw Hydraulic generator
Hydraulic oil radiator	Biodegradable hydraulic oil
Cold weather package	



Please contact LGMG or a local dealer for more details. LGMG reserves the right to change technical data without prior notice. All photos and pictures in this brochure are for promotional purposes only.

LINGONG HEAVY MACHINERY CO., LTD.

Address: No. 2676, Kejia Road, Jinan, Shandong, China
 Email: sales@lmgm.com.cn Tel: +86 531 6787 9283

LGMG Europe B.V.

Address: Donker Duyvisweg 301, 3316 BL Dordrecht, The Netherlands
 Email: sales@lmgmeurope.com Tel: +31 850 642 777

LGMG North America Inc.

Address: 4105 Live Oak Drive, Suite 100, The Colony, Texas 75056 United States
 Email: sales@lmgmna.com Tel: +1 833 288 5464

www.lmgmlifts.com

