

## Articulating Boom Lift

# AR20JE-2

- Machines feature a large platform, a dual capacity design, large chassis tilt angle, and better adaptability to various working conditions
- Proportional control achieves excellent synchronization of composite actions and realizes precise micro-motion control for comfortable operations.
- Remote software upgrades, parameter adjustments, and remote online diagnosis through telematics.
- Equipped with the intelligent self-diagnosis function, which facilitates convenient fault detection when the equipment arrives at or departs from the site.



[www.lgmglifts.com](http://www.lgmglifts.com)

# ARTICULATING BOOM LIFT

## SPECIFICATIONS

MODELS	AR20JE-2	
Measurements	Metric	Imperial
Work Height Max.	21.58m	70'10"
Platform Height Max.	19.58m	64'3"
Horizontal Outreach	11.87m	38'11"
Up and Over Height	8.19m	26'10"
Platform Length	2.44m	8'
Platform Width	0.9m	2'11"
<b>A</b> Stowed Length	9.42m	30'11"
Length-Transport (jib tucked)	7.63m	25'
<b>B</b> Overall Width	2.5m	8'2"
<b>C</b> Stowed Height	2.46m	8'1"
Height-Transport	2.96m	9'9"
<b>D</b> Wheelbase	2.51m	8'3"
<b>E</b> Ground Clearance	0.4m	1'4"

### PRODUCTIVITY

Platform Capacity (unrestricted/restricted)	260/350kg	573/772 lbs
Max. Platform Occupancy	2 (unrestricted) / 3 (restricted)	
Turntable Rotation	360°	
Drive Speed-Stowed	5km/h	3.1mph
Drive Speed-Raised	0.8km/h	0.5mph
Gradeability	45%	
Max. Wind Speed	12.5m/s	28mph
Turning Radius-Inside	3.5m	11'6"
Turning Radius-Outside	6.35m	20'10"
Max. Working Slope	4°/4°	
Tires Type	Foam-filled Non-marking	
Tires Models	335/40D665	

### POWER

Power Source	80V 228Ah	
--------------	-----------	--

### HYDRAULIC SYSTEM

Hydraulic Oil Volume	90L	23.8gal
----------------------	-----	---------

### WEIGHT

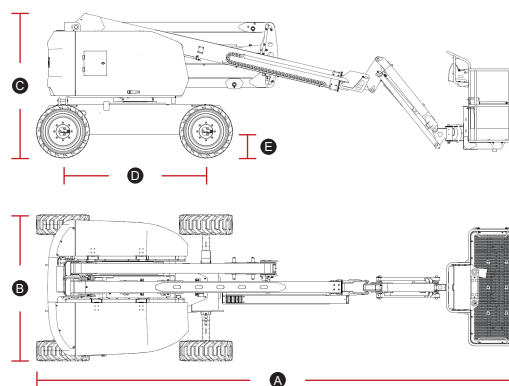
Machine Weight	9,100kg	20,062 lbs
----------------	---------	------------

### STANDARD FEATURES

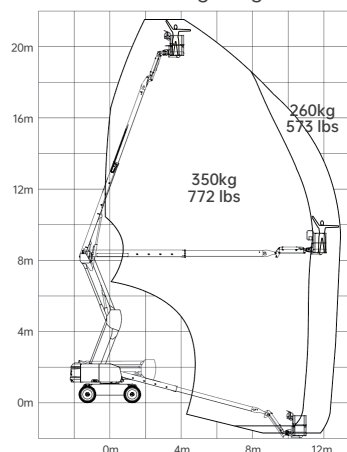
Auto-leveling platform	Emergency stop button
Hydraulic rotating platform 180°	Intelligent self-diagnosis function
Full proportional joystick control	Cylinder bellows
Descent alarm	OTA remote upgrade
Flashing beacons	Dustproof components
Horn/Hour meter	Over-head anti-collision protection
Over-tilt protection system	Platform tool box

### OPTIONAL

AC power to platform	Platform auxiliary guardrail
Platform work light	Platform storage rack
Half-height mesh platform	



AR20JE-2 Working Range



Please contact LGMG or a local dealer for more details.

LGMG reserves the right to change technical data without prior notice. All photos and pictures in this brochure are for promotional purposes only.

**LINGONG HEAVY MACHINERY CO., LTD.**

Address: No. 2676, Kejia Road, Jinan, Shandong, China

Email: sales@lgmg.com.cn Tel: +86 531 6787 9283

www.lgmglifts.com



**RELIABILITY IN ACTION**