

## TELESCOPIC BOOM LIFT

# T26JE-2

- A new parallelogram tower boom design with high rigidity and anti-torque provides an impressive reach and excellent obstacle-surmounting ability.
- Lightweight and compact, the new structure design reduces stowed and transportation dimensions, making it easy to transport via container and trailer, thereby lowering logistics costs.
- The dual power source design, featuring a backup battery for straightforward lifting and lowering movements, effectively addresses emergency situations. Combined with multiple safety protections, it ensures operators to work safely and efficiently.
- Remote software upgrades, parameter adjustments, and remote online diagnosis through telematics.
- The intelligent self-diagnosis function enables quick troubleshooting at the working site.



# TELESCOPIC BOOM LIFT

## SPECIFICATIONS

MODELS	T26JE-2	
Measurements	Metric	Imperial
Work Height Max.	28.2m	92'6"
Platform Height Max.	26.2m	85'11"
Horizontal Outreach	20m	65'7"
Platform Length	2.44m	8'
Platform Width	0.9m	2'11"
<b>A</b> Stowed Length	11.62m	38'1"
Length-Transport (jib tucked)	9.41m	30'10"
<b>B</b> Overall Width	2.5m	8'2"
<b>C</b> Stowed Height	2.83m	9'3"
Height-Transport	3.1m	10'2"
<b>D</b> Wheelbase	2.85m	9'4"
<b>E</b> Ground Clearance	0.4m	1'4"

PRODUCTIVITY		
Platform Capacity (unrestricted/restricted)	300/450kg	661/992 lbs
Max. Platform Occupancy	3	
Turntable Rotation	360°	
Drive Speed-Stowed	5km/h	3.1mph
Drive Speed-Raised	0.8km/h	0.5mph
Gradeability	45%	
Max. Wind Speed	12.5m/s	28mph
Turning Radius-Inside	4m	13'1"
Turning Radius-Outside	7.15m	23'5"
Max. Working Slope	5°	
Tires Type	Foam-filled Non-marking	
Tires Models	15-625	

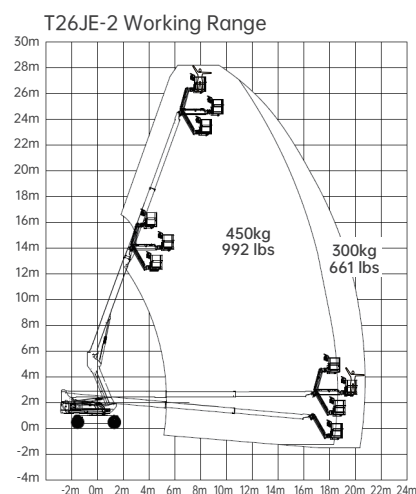
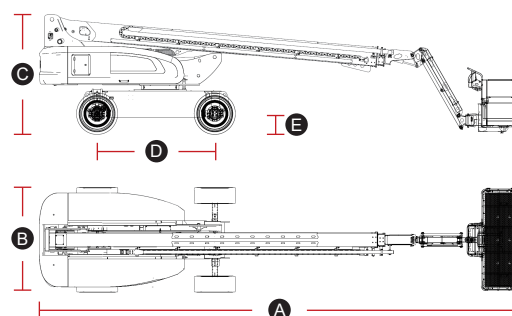
POWER		
Power Source	80V 304Ah	
HYDRAULIC SYSTEM		
Hydraulic Oil Volume	115L	30.4gal
WEIGHT		
Machine Weight	15,200kg	33,510 lbs

## STANDARD FEATURES

OTA remote upgrade	Emergency stop button
Intelligent self-diagnosis function	Descent alarm
Auto-leveling platform	Flashing beacons
Hydraulic rotating platform 180°	Horn/Hour meter
Full proportional joystick control	Dual load 300kg/450kg
Load sensitive system	Over-head anti-collision protection
Over-tilt protection system	Full time active oscillation of axles

## OPTIONAL

AC power to platform	Half-height mesh platform
Platform work light	Platform storage rack
Platform auxiliary guardrail	



Please contact LGMG or a local dealer for more details.

LGMG reserves the right to change technical data without prior notice. All photos and pictures in this brochure are for promotional purposes only.

**LINGONG HEAVY MACHINERY CO., LTD.**

Address: No. 2676, Kejia Road, Jinan, Shandong, China

Email: sales@lgmg.com.cn Tel: +86 531 6787 9283

www.lgmglifts.com



**RELIABILITY IN ACTION**