

RELIABILITY IN ACTION



LINGONG HEAVY MACHINERY CO., LTD.

Address: No. 2676, Kejia Road, Jinan, Shandong, China
Email: sales@lmg.com.cn
Tel: +86 531 6787 9283

LGMG North America, Inc.

Address: 4105 Live Oak Drive, Suite 100, The Colony, Texas 75056 United States
Email: sales@lmgna.com
Tel: +1 833 288 5464

FOLLOW US:    

www.lmglifts.com

Please contact LGMG or local dealer for more details.
LGMG reserves the right to change technical data without prior notice.
All photos and pictures in this brochure are for promotional purpose only.
This brochure comes into effect in October, 2023.
This brochure is only available in the United States.

Information of agent

LGMG

MOBILE ELEVATING WORK PLATFORMS



CONTENTS



P01-02 Contents

P03-06 Group Profile

P07-10 Diesel Telescopic Boom Lift

P11-12 Articulating Boom Lift

P13-14 Electric RT Scissor Lift

P15-18 Diesel RT Scissor Lift

P19-20 Scissor Lift Range (SS Series)

P21-22 Scissor Lift Range (AC Series)

P23-24 Vertical Mast Lift

P25-26 Service & Application

GROUP PROFILE

Founded in 1972, Lingong Machinery Group is one of the key players in construction machinery, one of the top 100 enterprises in the machinery industry and one of the top four groups in the construction machinery industry in China.

The Group consists of three core companies, including: Shandong Lingong Construction Machinery Co., Ltd. (SDLG), Lingong Heavy Machinery Co., Ltd. (LGMG) and Lingong Special Machinery Co., Ltd. The Group's business covers five sectors: construction machinery, mining machinery, MEWPs, special machinery and component manufacturing.

LGMG, located in Jinan, Shandong Province, China, is a privately-owned subsidiary of Lingong Group. Business segments include MEWPs, mining equipment. Today, LGMG has become an important player in the Chinese construction machinery industry, holding a place as one of the top 100 global construction machinery manufacturers, the top 30 Chinese construction machinery manufacturers and the top 5 Chinese MEWPs manufacturers.

LGMG offers a wide range of access equipment, electric and rough terrain scissor lifts, articulating and telescopic boom lifts. In 2022, telehandlers have been added to LGMG's product line.

In 2018, LGMG Europe was established in the Netherlands to serve as a distribution and service hub for the EMEA market.

In 2019, LGMG North America opened a headquarters in Pennsylvania together with other three warehouses across the country.

In 2020, LGMG Japan was established, integrating marketing and technology research and development functions into one.

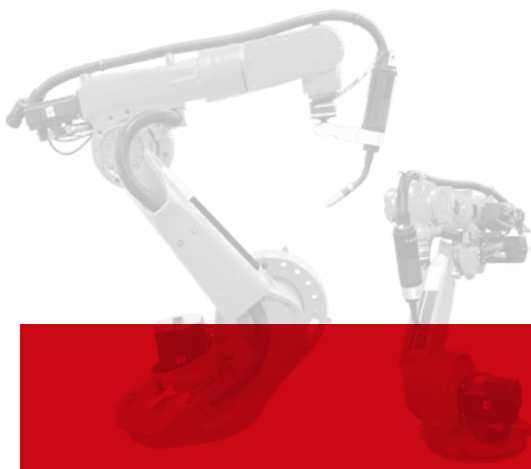
In 2023, LGMG Korea and LGMG Austraila were established.

LGMG is on the road of internationalization, moving forward steadily, building LGMG into an international brand.



R&D TEAM

LGMG sees that R&D and innovation are key for sustainable growth, and has therefore established the Provincial Level Innovation, for new product development and component reliability tests. In addition, LGMG has collaborated with a top Chinese university to establish the LGMG Research Institute, aiming to crack industry challenges and develop cutting edge technology, as well as have a profound effect on the cultivation on future talent for our industry.

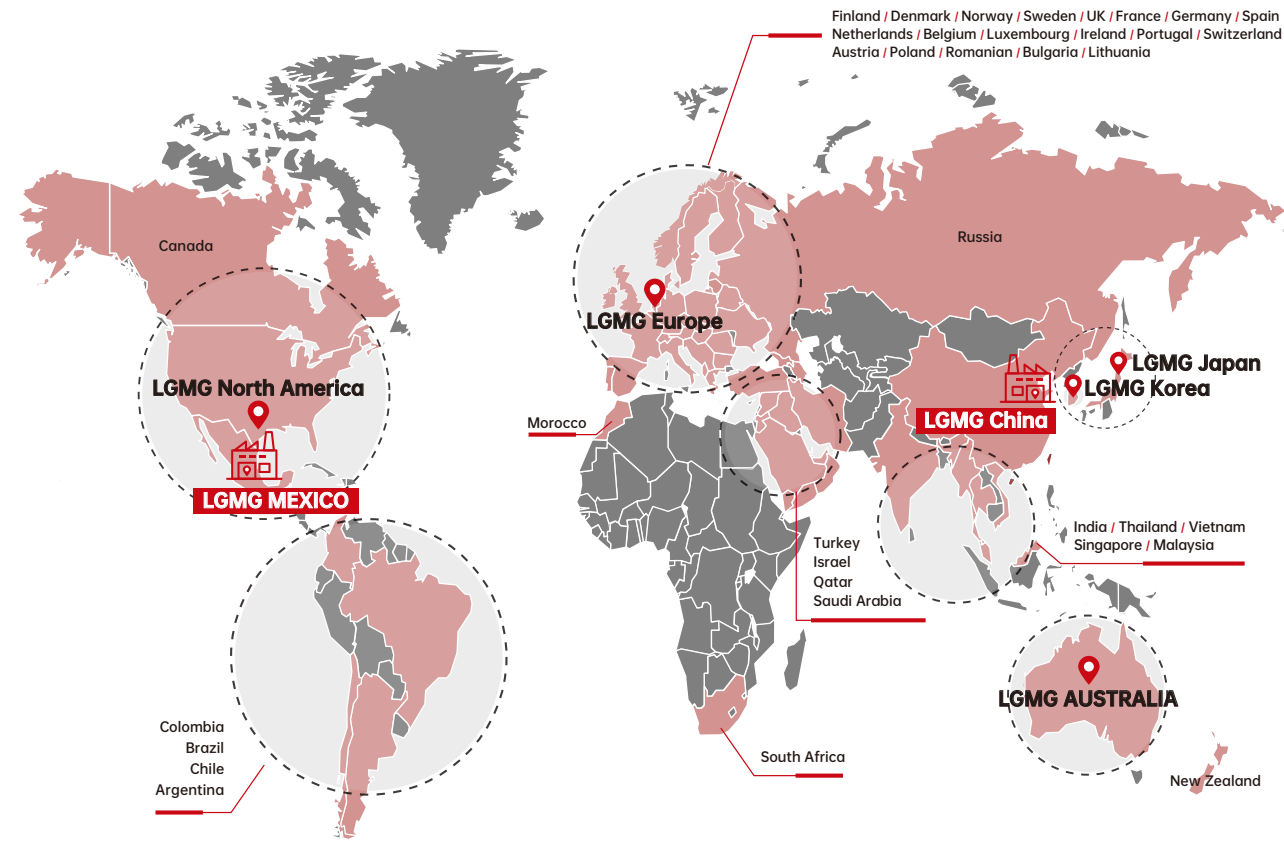


MANUFACTURING



LGMG strictly abides by its Lean Production System (LPS 6 PRINCIPLES) for each procedure, from parts welding and painting, to machine assembling and final product inspection, to ensure the highest production efficiency and the best quality.

GLOBAL SALES NETWORK



200+ PARTNERS

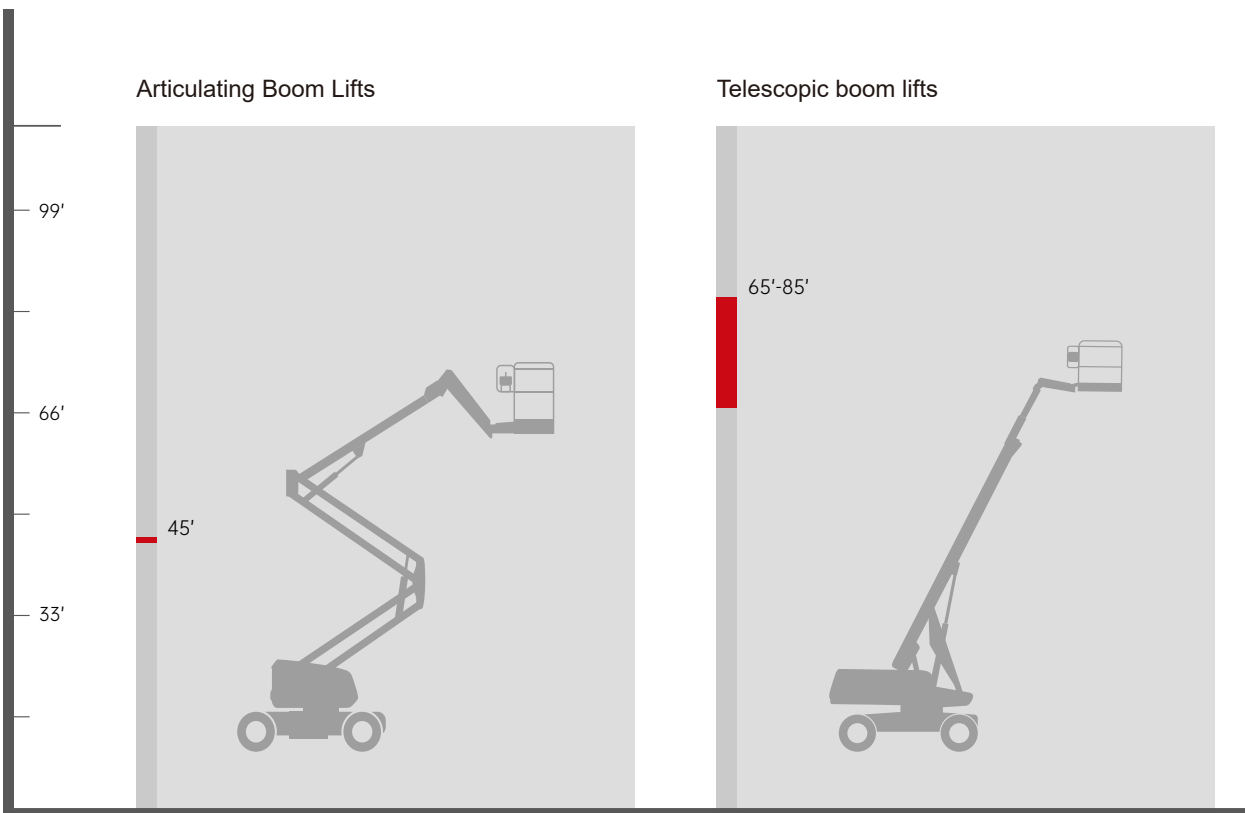
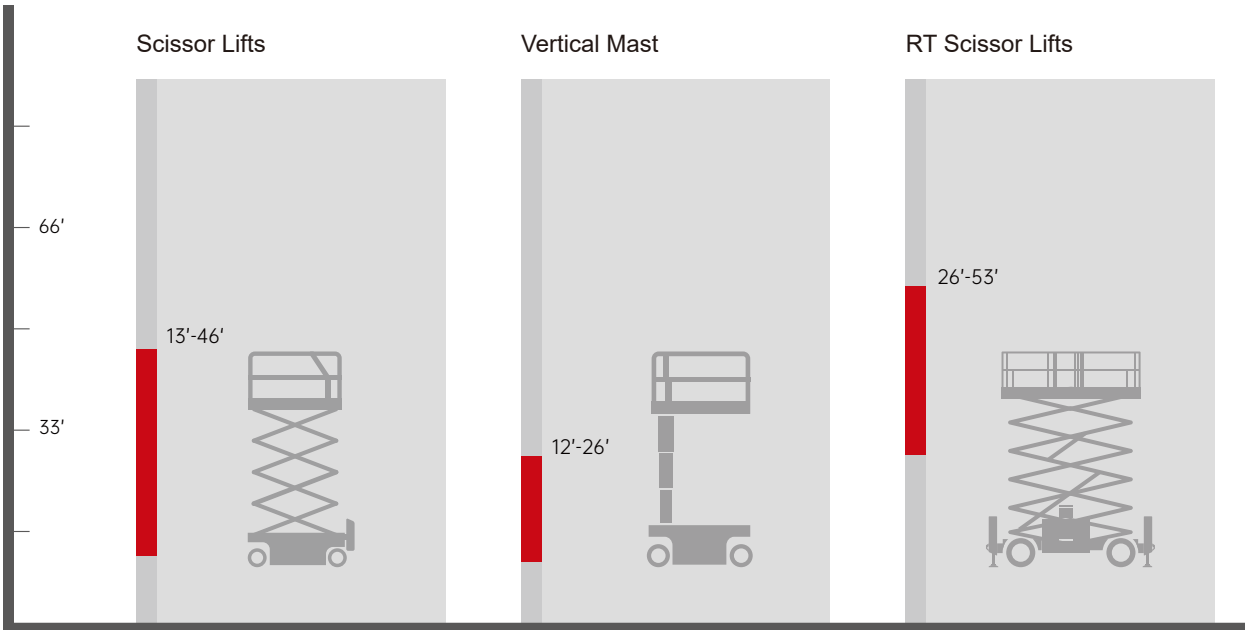
60+ COUNTRIES

- 🔧 **LOCAL TEAM SUPPORT**
- 🚚 **LOCAL MACHINE DELIVERY**
- 📦 **LOCAL SPARE PARTS**
- 👨 **LOCAL FAST AND HIGH QUALITY SERVICE**
- 👥 **LOCAL TRAINING**

The establishment of LGMG overseas Subsidiaries have ensured quick and effective response time which fully meets our customers' requirements on machine inventory, parts and support with local professional teams. LGMG products have passed the major international standards such as CE, ANSI, Australia AS, CSA, KC, JIS, EAC. Products have been sold to over 200 partners in more than 60 countries around the world, including the U.S., Canada, the U.K., Germany, the Netherlands, Italy, Spain, Korea and Japan.



PRODUCT RANGE



High Capacity High Productivity

LGMG has a complete line of engine-driven, high-capacity telescopic boom aerial work platforms, with the maximum working height ranging from 71' 6" to 91' 6". With a double capacity design of 992/661lbs, the machine can allow up to 3 people to work at the same time both indoors and outdoors, which greatly improves work efficiency.

FEATURES

- Oscillating, full-floating axle, maximum 5 degree tilt angle chassis, allows the wheels to grip to the ground when navigating hard, uneven terrain.
- Proportional lift and drive controls deliver smoother maneuvering, precise positioning and comfortable operation.
- Automatic engine speed control with a boom that descends by gravity. Allows smooth movement, saves energy, and reduces noise.
- Intelligent diagnostic and control system with precise fault analysis, convenient and efficient.
- More than 95% of the main components and more than 80% of the structural parts are interchangeable, which helps to reduce spare parts storage costs and improve maintenance efficiency.

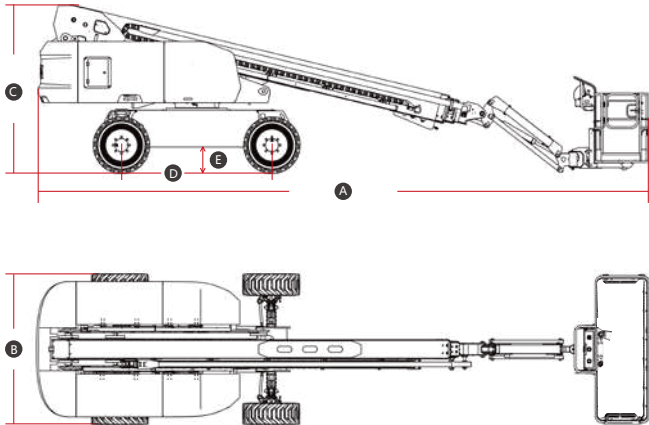
SPECIFICATIONS

MODELS	T65J-H	T85J-H
Measurements	Imperial	Imperial
Work Height Max.	71'6"	91'6"
Platform Height	65'	85'
Horizontal Outreach Max.	54'6"	70'10"
Platform Length	8'	8'
Platform Width	2'11"	2'11"
A Length-Stowed	33'6"	41'9"
Length-Transport (jib tucked)	27'3"	36'1"
B Overall Width	8'2"	8'2"
C Height-Stowed	9'1"	9'3"
Height-Transport	9'6"	9'11"
D Wheelbase	8'3"	9'4"
E Ground Clearance	1'4"	1'5"
PRODUCTIVITY		
Platform Capacity (unrestricted)	661 lbs	661 lbs
Platform Capacity (restricted)	992 lbs	992 lbs
Max. Platform Occupancy	2 (unrestricted) / 3 (restricted)	
Turntable Rotation	360°Continuous	360°Continuous
Drive Speed-Stowed	3mph	3mph
Drive Speed-Raised	0.5mph	0.5mph
Gradeability	45%	45%
Max. Wind Speed	28mph	28mph
Turning Radius-Inside	8'2"	12'
Turning Radius-Outside	18'	21'6"
Max. Slope	5°/5°	5°/5°
Tire Type	RT Foam-filled	RT Foam-filled
Tire Size	355/55D625	18-625
Ground Pressure, Tyres	97.2 psi	130.2 psi
POWER		
Power	Kubota V2403 36kW/48.2hp Deutz D2.9 L4 36.4kW/48.8hp	Kubota V3307 54.6kW/73.2hp Deutz TD2.9 L4 55.4kW/74.2hp
Fuel Tank Capacity	26.4gal	26.4gal
HYDRAULIC SYSTEM		
Hydraulic Oil Volume	47.5gal	47.5gal
WEIGHT		
Machine Weight (ANSI)	26,455 lbs	40,345 lbs

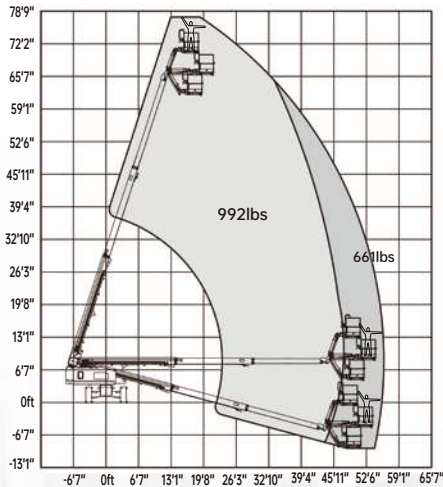
STANDARD FEATURES

- Proportional control
- Horn/Hour meter
- Emergency stop button
- Auto-leveling platform
- Anti-collision protection
- Over-tilt protection system
- Platform control cover
- Overload sensing system
- Intelligent diagnostic system
- Descent alarm with flashing beacon
- Flashing beacons
- Cylinder bellows
- Platform tool box
- Oscillating axle
- Telematics ready
- RT Foam-filled tires

MACHINE SIZE



T65J-H WORKING RANGE



OPTIONAL

- AC power to platform
- Telematics
- Foam-filled non-marking tires
- Solid non-marking tires (T65J-H)
- Solid tires (T65J-H)
- Half-height mesh platform
- Hydraulic generator kit
- 3.5kw Hydraulic generator
- 7.5kw Hydraulic generator (T65J-H)
- 12kw Hydraulic generator (T85J-H)
- Hydraulic oil radiator
- Cold weather package
- Glazier kit
- Auxiliary rail
- White noise alarm
- Biodegradable hydraulic oil
- Pipe rack
- Platform Welder bracket



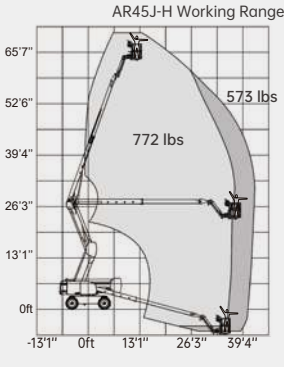
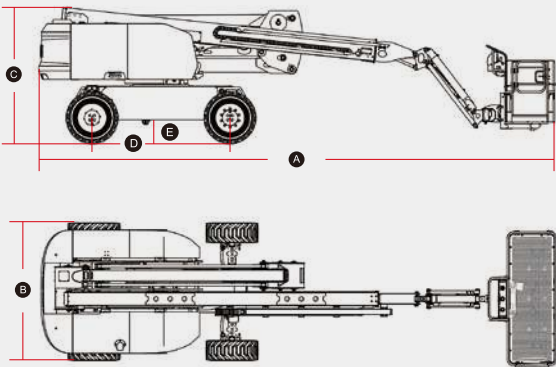
A45JE/AR45J-H
Articulating Boom lifts

LGMG articulating boom aerial work platforms are purpose-built for outdoor construction and industrial applications.

- Proportional control ensures smooth driving, precise positioning and comfortable operation.
- Self-leveling platform together with hydraulic platform rotation delivers exceptional productivity.
- Intelligent self-diagnostic system for quick troubleshooting.
- AR45J-H is fitted with the full-time active oscillating axle and three steering models: four-wheel steering, crab steering and front-wheel steering.

SPECIFICATIONS

MODELS	A45JE	AR45J-H
Measurements	Imperial	Imperial
Work Height Max.	51'10"	52'2"
Platform Height Max.	45'3"	45'7"
Horizontal Outreach	25'7"	25'3"
Up and Over Height	23'10"	24'3"
Platform Length	6'	6'
Platform Width	2'6"	2'6"
A Stowed Length	21'10"	22'10"
Length-Transport (jib tucked)	18'7"	19'4"
B Overall Width	5'11"	7'7"
C Stowed Height	6'6"	7'4"
Height-Transport	8'4"	8'8"
D Wheelbase	6'8"	7'5"
E Ground Clearance	9"	1'2"
PRODUCTIVITY		
Platform Capacity(unrestricted)	507 lbs	661 lbs
Platform Capacity (restricted)	/	992 lbs
Max. Platform Occupancy	2	2 (unrestricted) / 3 (restricted)
Turntable Rotation	355°	355°
Drive Speed-Stowed	3mph	3.1mph
Drive Speed-Raised	0.62mph	0.5mph
Gradeability	30%	45%
Max. Wind Speed	28mph	28mph
Turning Radius-Inside	6'	5'6"
Turning Radius-Outside	13'5"	12'
Max. Slope	3°/3°	5°/5°
Tire Type	Foam-filled Non-marking	RT Foam-filled
Tire Models	9-14.5	315/55D20
Ground Pressure, Tyres	119 psi	75.4 psi
POWER		
Lead-acid Battery	48V(8x6V),390Ah,FLA	/
Lithium Battery	48V 280Ah (A45JE-Li)	/
Power Source	/	Kubota V2403 36kW/48.2hp
Fuel Tank Capacity	/	17.2gal
HYDRAULIC SYSTEM		
Hydraulic Oil Volume	7.9gal	19.8gal
WEIGHT		
Machine Weight (ANSI)	16,535 lbs	16,314 lbs



PART 3 ELECTRIC RT SCISSOR LIFT



- The large platform with high capacity maximizes productivity.
- Battery powered, zero emission and quiet drive mean this machine is environmentally friendly.
- Equipped with oscillating axles that provide excellent performance in soft and rough terrain conditions.
- Hydraulic outriggers deliver a better solution on uneven ground.
- Intelligent self-diagnostic system for quick troubleshooting.

SPECIFICATIONS

MODELS	SR3369E	SR4069E
Measurements	Imperial	Imperial
Work Height Max.	38'5"	45'7"
A Platform Height-Raised	31'10"	39'
B Platform Height-Stowed	4'8"	5'1"
C Platform Length	9'2"	9'2"
D Platform Width	5'3"	5'3"
E Overall Length	12'4"	12'4"
F Overall Width	5'10"	5'10"
G Overall Height-Rails up	8'4"	8'10"
Overall Height-Rails down	6'2"	6'8"
Extension Deck	5'	5'
H Wheelbase	8'	8'
Ground Clearance-Center	9"	9"
PRODUCTIVITY		
Max. Platform Occupancy (in/out)	4 / 2	3 / 2
Platform Capacity	1,000 lbs	805 lbs
Platform Capacity-Extension	310 lbs	310 lbs
Drive Height	Full Height	Full Height
Gradeability-Stowed	35%	35%
Min. Turning Radius	15'7"	15'7"
Raise/Lower Speed	39s / 46s	61s / 55s
Brakes	Rear-wheel Brake	Rear-wheel Brake
Drive Mode	4x2	4x2
Tire Type	Foam-filled Non-marking	Foam-filled Non-marking
Tire Size	26"x11"	26"x11"
Ground Pressure, Tyres	76.3 psi	83.7 psi
POWER		
Power Source	48V DC (8x6V),315Ah,FLA	48V DC (8x6V),315Ah,FLA
HYDRAULIC SYSTEM		
Hydraulic Oil Volume	18.5gal	18.5gal
WEIGHT		
Machine Weight (ANSI)	9,570 lbs	11,245 lbs

PART 4

DIESEL RT SCISSOR LIFT

- Larger work platform with high capacity offers great productivity.
- Powerful diesel engine, oscillating axels and four-wheel drive provide better performance on most rough terrain job sites.
- The overload system and motion alarm help the operator to complete the job in a much safer way.
- Pull-out engine tray for easy access and maintenance.
- On-board self-diagnosis system makes it easier for quick troubleshooting.



SPECIFICATIONS

MODELS	SR2669D	SR3369D	SR4069D
Measurements	Imperial	Imperial	Imperial
Work Height Max.	31'10"	38'5"	45'7"
A Platform Height-Raised	25'3"	31'10"	39'1"
B Platform Height-Stowed	4'8"	4'8"	5'1"
C Platform Length	9'2"	9'2"	9'2"
D Platform Width	5'3"	5'3"	5'3"
E Overall Length	12'4"	12'4"	12'4"
F Overall Width	5'10"	5'10"	5'10"
G Overall Height-Rails up	8'6"	8'4"	8'10"
Overall Height-Rails down	6'2"	6'2"	6'8"
Extension Deck	5'	5'	5'
H Wheelbase	7'6"	7'6"	7'6"
Ground Clearance-Center	9"	9"	9"
PRODUCTIVITY			
Max. Platform Occupancy (in/out)	4 / 4	4 / 2	3 / 2
Platform Capacity	1,499 lbs	1,000 lbs	805 lbs
Platform Capacity-Extension	310 lbs	310 lbs	310 lbs
Drive Height	Full Height	Full Height	Full Height
Gradeability-Stowed	40%	35%	35%
Min. Turning Radius	15'7"	15'7"	15'7"
Raise/Lower Speed	35s / 30s	39s / 46s	61s / 55s
Brakes	Four-wheel Brake	Four-wheel Brake	Four-wheel Brake
Drive Mode	4x4	4x4	4x4
Tire Type	RT Foam-filled	RT Foam-filled	RT Foam-filled
Tire Size	26"x11"	26"x11"	26"x11"
Ground Pressure, Tyres	71.1 psi	76.1 psi	83.5 psi
POWER			
Diesel Engine	Kubota D1105 18.5kW/24.8hp	Kubota D1105 18.5kW/24.8hp	Kubota D1105 18.5kW/24.8hp
Dual Fuel Engine (optional) *	Kubota WG972 20.5kW/27.5hp Gas/LPG Dual Fuel	Kubota WG972 20.5kW/27.5hp Gas/LPG Dual Fuel	Kubota WG972 20.5kW/27.5hp Gas/LPG Dual Fuel
Fuel Tank Capacity	14gal	14gal	14gal
HYDRAULIC SYSTEM			
Hydraulic Oil Volume	13.2gal	13.2gal	13.2gal
WEIGHT			
Machine Weight (ANSI)	9,193 lbs	9,545 lbs	11,200 lbs

* Please consult us for detailed parameters of the dual fuel version.

SPECIFICATIONS

MODELS	SR3390D	SR4390D	SR5390D
Measurements	Imperial	Imperial	Imperial
Work Height Max.	39'4"	49'3"	58'9"
A Platform Height-Raised	32'10"	42'8"	52'2"
B Platform Height-Stowed	5'2"	6'	6'10"
C Platform Length	13'1"/15'9"	13'1"/15'9"	13'1"/15'9"
D Platform Width	6'	6'	6'
E Overall Length (with ladder)	16'1"	16'1"	16'1"
F Overall Width	7'7"	7'7"	7'7"
G Overall Height-Rails up	9'	9'9"	10'5"
Overall Height-Rails down	6'9"	7'6"	8'2"
Extension Deck	4'9"/3'9"	4'9"/3'9"	4'9"/3'9"
H Wheelbase	9'4"	9'4"	9'4"
Ground Clearance-Center	9"	9"	9"
PRODUCTIVITY			
Max. Platform Occupancy (in/out)	7 / 7	7 / 7	4 / 4
Platform Capacity	2,430 lbs	1,500 lbs	1,500 lbs
Platform Capacity-Extension	510 lbs	510 lbs	510 lbs
Drive Height	Full Height	Full Height	27'11"
Gradeability-Stowed	40%	40%	40%
Min. Turning Radius	17'6"	17'6"	17'6"
Raise/Lower Speed	45s / 45s	55s / 55s	55s / 55s
Brakes	Four-wheel Brake	Four-wheel Brake	Four-wheel Brake
Drive Mode	4x4	4x4	4x4
Tire Type	Solid	Solid	Solid
Tire Size	33"x11"	33"x11"	33"x11"
Ground Pressure, Tyres	128.7 psi	128.8 psi	128.8 psi
POWER			
Power Source	Kubota V2403 36kW/48.2hp	Kubota V2403 36kW/48.2hp	Kubota V2403 36kW/48.2hp
Fuel Tank Capacity	30gal	30gal	30gal
HYDRAULIC SYSTEM			
Hydraulic Oil Volume	37gal	37gal	37gal
WEIGHT			
Machine Weight (15'9")	15,400 lbs	16,450 lbs	18,080 lbs
Machine Weight (13'1")	15,170 lbs	16,230 lbs	17,860 lbs

STANDARD FEATURES

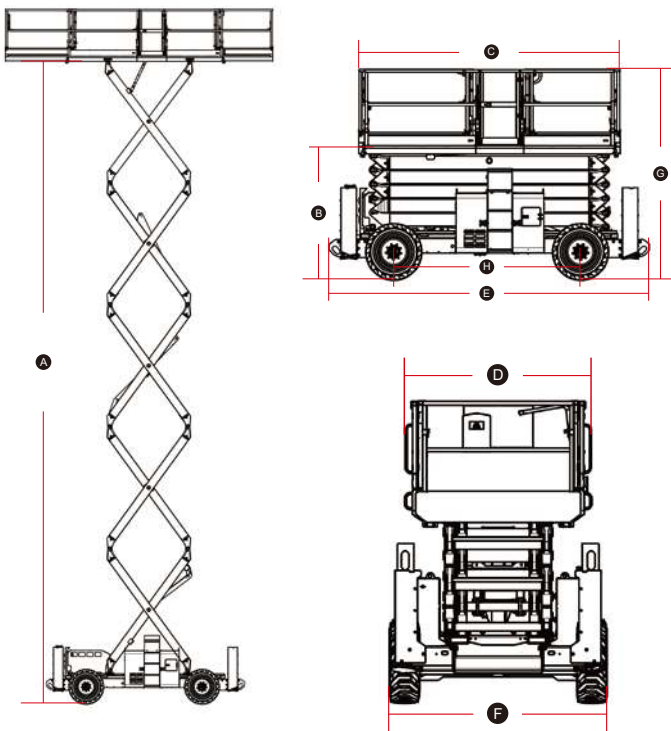
- Proportional control
- Foldable guardrail
- Emergency stop device
- Manual brake release
- Emergency descent
- Oscillating axle
- Self-lock entry gate
- Tilt alarm with lift cut-out
- load sensing system
- Descent alarm with flashing beacon
- All motions alarm
- Intelligent diagnostic system
- Telematics ready

OPTIONAL

- AC power to platform
- Telematics
- Foam-filled non-marking tires
- Solid non-marking tires
- Biodegradable hydraulic oil
- Pipe racks (SR3390D/SR4390D/SR5390D)

* The features are for electric and diesel RT scissor lifts.

MACHINE SIZE



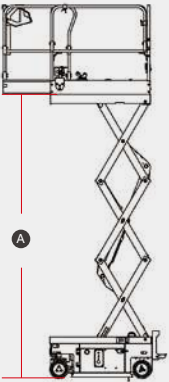
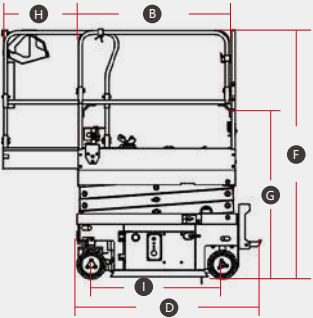
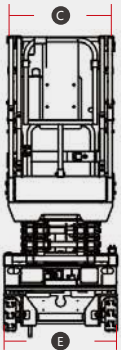
LGMG's micro scissors are ideal solutions for the low-level access and space restricted application job sites. Shorten overall machine length, lighter weight and compact design make the machine suitable for most elevators.

- Battery powered, zero emission, and quiet drive make the machine environmentally friendly.
- Efficient electric drive system provides longer-lasting performance and better gradeability.
- Exceptional waterproofed drive system design provides excellent performance in wet conditions.



SPECIFICATIONS

MODELS	SS1330ER	SS1532ER
Measurements	Imperial	Imperial
Work Height Max.	19' / 19' (in/out)	21' 10" / 18' 7" (in/out)
A Platform Height-Raised	12' 5" / 12' 5" (in/out)	15' 1" / 11' 8" (in/out)
B Platform Length	4' 6"	4' 6"
C Platform Width	2' 3"	2' 3"
D Overall Length (with ladder)	5' 2"	5' 2"
E Overall Width	2' 6"	2' 8"
F Overall Height-Guardrails Up	6' 6"	7' 2"
G Overall Height-Guardrails Down	5' 2"	5' 9"
H Extension Deck	2'	2'
I Wheelbase	3' 7"	/
Ground Clearance(Stowed/Raised)	2" / 0.7"	3" / 0.7"
PRODUCTIVITY		
Max. Platform Occupants (In/Out)	2 / 1	2 / 1
Platform Capacity	530 lbs	510 lbs
Platform Capacity-Extension Deck	265 lbs	265 lbs
Drive Height	Full Height	Full Height
Gradeability-Lowered	25%	25%
Turning Radius-Outside	4' 9"	4' 11"
Raise/Lower Speed	25 / 18s	25 / 20s
Brakes	Rear-wheel Brake	Rear-wheel Brake
Drive Mode	4x2	4x2
Tires Type	Solid Non-marking	Solid Non-marking
WEIGHT		
Machine Weight (ANSI)	1940 lbs	2255 lbs



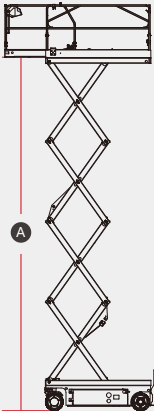
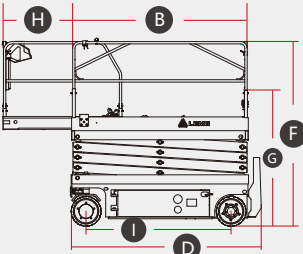
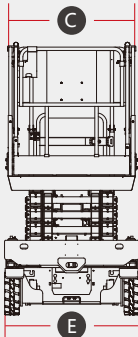
SCISSOR LIFT RANGE (AC SERIES)

- Entire range designed for Indoor and outdoor use.
- Maintenance-free AC functional motor & driver motor.
- IP67 for waterproof and dustproof.
- Large lower control panel.
- Universal key components.



SPECIFICATIONS

MODELS	S1932E(AC)	S2632E(AC)	S2646E(AC)	S3246E(AC)	S4046E(AC)	S4650E(AC)
Measurements	Imperial	Imperial	Imperial	Imperial	Imperial	Imperial
Work Height Max.	25'7"	32'2"/26'3" (in / out)	32'10"	39'4"	45'11"/31'2" (in / out)	51'10"/32'9" (in / out)
A Platform Height-Raised	19'	25'7"/19'8" (in / out)	26'3"	32'10"	39'4"/24'7" (in / out)	45'3"/26'3" (in / out)
B Platform Length	5'5"	7'5"	7'5"	7'5"	7'5"	8'8"
C Platform Width	2'5"	2'7"	3'8"	3'8"	3'8"	3'8"
D Overall Length	6'	8'	8'2"	8'2"	8'2"	9'2"
E Overall Width	2'7"	2'9"	3'10"	3'10"	3'10"	4'3"
F Overall Height-Guardrails Up	7'1"	7'6"	7'9"	8'2"	8'8"	9'
G Overall Height-Guardrails Down	5'11"	6'3"	5'1"	5'6"	5'11"	6'4"
H Extension Deck	2'11"	2'11"	2'11"	2'11"	2'11"	2'11"
I Wheelbase	4'5"	6'1"	6'1"	6'1"	6'1"	7'3"
Ground Clearance (Stowed/Raised)	3"/1"	4"/1"	4"/1"	4"/1"	4"/1"	4"/1"
PRODUCTIVITY						
Max. Platform Occupancy	2 (in) / 1 (out)					
Platform Capacity	510 lbs	510 lbs	990 lbs	705 lbs	705 lbs	705 lbs
Platform Capacity-Extension Deck	265 lbs	265 lbs	265 lbs	265 lbs	265 lbs	265 lbs
Drive Height	Full Height					
Gradeability-Stowed	25%	25%	25%	25%	25%	25%
Min. Turning Radius	5'11"	7'3"	8'	8'	8'	9'4"
Raise/Lower Speed	16s/28s	31s/40s	35s/40s	58s/48s	65s/60s	80s/65s
Brakes	Front-wheel Brake					
Drive Mode	4x2	4x2	4x2	4x2	4x2	4x2
Tire Type	Solid Non-marking					
Tire Size	12"x4"	15"x5"	15"x5"	15"x5"	15"x5"	15"x5"
Ground Pressure, Tyres	141.8 psi	145.3 psi	167.4 psi	196.5 psi	185.2 psi	199.9 psi
POWER						
Power Source	24V (4x6V),225Ah,FLA		24V (4x6V),240Ah,FLA		24V (4x12V),300Ah,FLA	
HYDRAULIC SYSTEM						
Hydraulic Oil Capacity	1.3gal	3.4gal	4.2gal	6.1gal	6.1gal	6.7gal
WEIGHT						
Machine Weight (ANSI)	3,549 lbs	4,850 lbs	5,110 lbs	6,603 lbs	6,548 lbs	7,716 lbs



M1230JE / M2030SE / M2640TE

VERTICAL MAST LIFT

SPECIFICATIONS

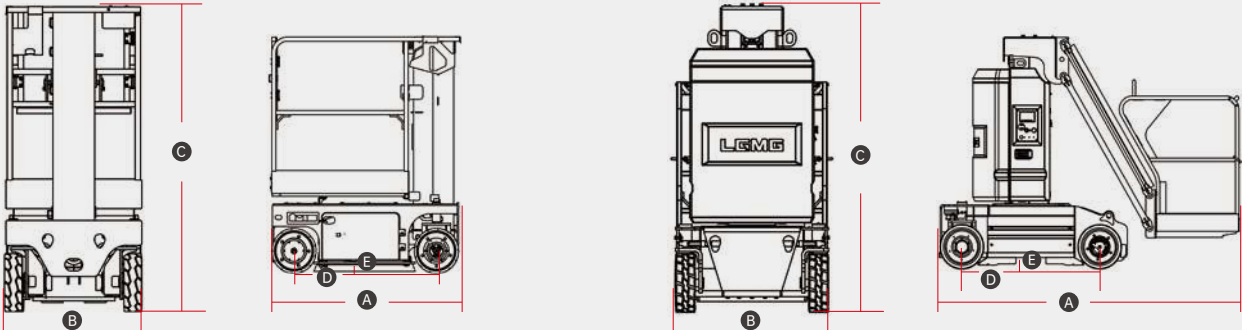
MODELS	M1230TE	M2030SE	M2640JE
Measurements	Imperial	Imperial	Imperial
Working Height Max.	18'8"	26'3"/22'4" (in / out)	32'10"
Platform Height (Raised)	12'2"	19'8"/15'9" (in / out)	26'3"
Horizontal Outreach	/	/	10'6"
Up and Over Clearance Max.	/	/	21'8"
Platform Size (L×W)	52"x30"	29"x30"	39"x28"
A Overall Length	4'7"	4'7"	8'6"
B Overall Width	2'6"	2'6"	3'3"
C Overall Height (Stowed)	5'6"	6'6"	6'6"
D Wheelbase	3'5"	3'6"	3'11"
E Ground Clearance	3"	2"	4"
PRODUCTIVITY			
Max. Platform Occupancy (in/out)	1 / 0	1 / 1	2 / 1
Platform Capacity	507 lbs	352 lbs	440 lbs
Drive Mode	Front wheels drive	/	Rear Wheel
Brakes	/	/	Rear Wheel
Turntable Rotation	/	/	345°
Max. Drive Speed (Stowed)	2.5mph	2.2mph	2.2mph
Max. Drive Speed (Raised)	0.37mph	0.5mph	0.27mph
Gradeability	25%	25%	25%
Tailswing	/	/	0
Tire Size	13"x4"	1'x40"	15"x5"
Ground Pressure, Tyres	118.1 psi	/	196.3 psi
POWER			
Power Source	24V (2x12V),145Ah,AGM	24V (2x12V),100Ah,AGM	24V,250Ah,FLA
HYDRAULIC SYSTEM			
Hydraulic Oil Capacity	1.5gal	/	1.7gal
WEIGHT			
Machine Weight (ANSI)	1,720 lbs	2,464 lbs	5,997 lbs

M1230TE

The M1230TE can be easily transported through doorways and passenger elevators. Small inner turning radius and full-height drive allow for flexible use in narrow spaces. It is also equipped with high-quality boom, intelligent self-diagnosis system, three-stage integrated rotatable telescopic oil cylinder, etc., which are safe, reliable and durable.

M2640JE

The M2640JE has excellent manoeuvrability and is easy to manoeuver in tight spaces. The 10'6" jib allows for a larger working range. Featuring zero-emission, environmentally friendly electric drive, and high efficiency, the whole vehicle is small in size, light in weight and easy to transport.



SERVICE CONCEPT

Create Lasting Value, Boost Brand-building, Focus on Detail, Go Beyond Expectation

LGMG provides comprehensive pre-sale, sale and after-sale attentive service. Integrate precise service into any link closely related to each customer, and provide technical support, training programs, warranty and parts sales to customers during the whole machine life-cycle.



SERVICE CONCEPT

TECHNICAL SUPPORT

LGMG service teams always provide remote technical support by phone or email and even on-site support with manuals, tools, information and service solutions.

SERVICE CONCEPT

TRAINING SUPPORT

LGMG provides various training programs for operators and service technicians, helping rental companies to improve their service and training capabilities via dedicated courses prepared by LGMG teams either online or on-site.



SERVICE CONCEPT

PARTS SUPPORT

LGMG provides sufficient stock of parts in LGMG's China headquarters, LGMG Europe/North America/Japan, and other global service centers. Accurate parts manuals and technical support teams are always available to answer your questions.

TRAINING CASE

Rigorous trainings / Professional certifications



APPLICATION SCENARIO

Perfect for different job sites

