

LGMG

H625E

ELECTRIC POWERED
TELEHANDLER

6m WORKING
HEIGHT



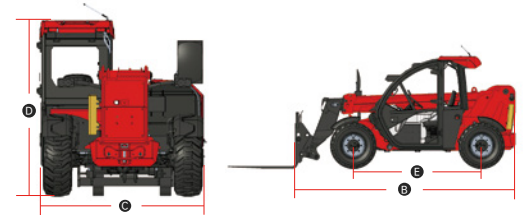
2500kg RATED
LOAD



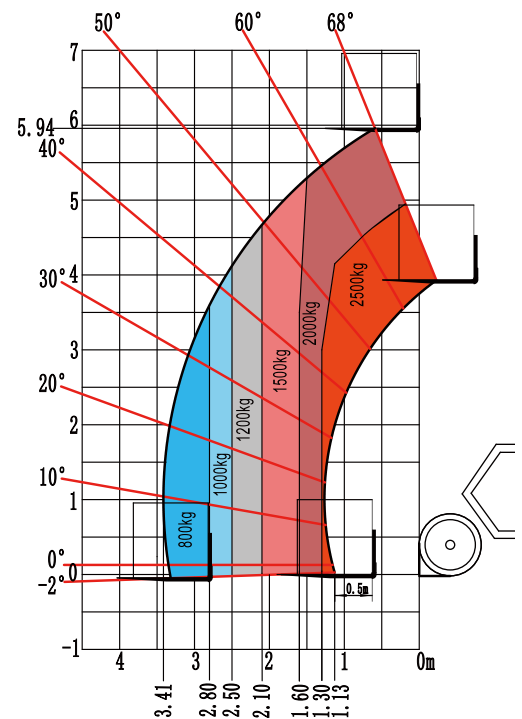
LGMG TELEHANDLER

SPECIFICATIONS

MODELS	H625E	
Measurements	Metric	Imperial
A Max. Lifting Height	5.94m	19'6"
Max. Outreach	3.41m	11'2"
B Overall Length	3.99m	13'1"
C Overall Width	1.86m	6'1"
D Overall Height	1.97m	6'6"
E Wheelbase	2.3m	7'7"
Ground Clearance	0.32m	1'1"
PRODUCTIVITY		
Max. Capacity	2,500kg	5,512 lbs
Gradeability-Unladen	35%	
Min. Turning Radius	3.36m	11'
Tilt Angle	±5°	
Drive /Steering Mode	4 Wheel Drive / 4 Wheel Steer	
Primary Boom Ascending Time	12+0.5s	
Primary Boom DescendingTime	8.5+0.5s	
Boom Extending Time	8.5+0.5s	
Boom Retracting Time	6.5+0.5s	
Travel Speed	16km/h	10mph
Service Brake	Multi-disc Wet Brake of Front Axle	
Standard Tyres	12-16.5 12PR	
ENGINE/BATTERY		
Battery Technology	Lithium Battery	
Battery Nominal Voltage	76.8V	
Battery Capacity	304Ah	
Hydraulic motor power	14kW	
Drive motor power	12.3kW	
ELECTRIC CIRCUIT		
12V Battery capacity	120Ah	
HYDRAULIC SYSTEM		
Working pump displacement	56 l/min	
Hydraulic Oil Capacity	65L	17.2 gal
WEIGHT		
Machine Weight	4,950kg	10,913 lbs



LOAD CHART



Please contact LGMG or a local dealer for more details.

LGMG reserves the right to change technical data without prior notice. All photos and pictures in this brochure are for promotional purposes only.

LINGONG HEAVY MACHINERY CO., LTD.

Address: No. 2676, Kejia Road, Jinan, Shandong, China

Email: sales@lmg.com.cn Tel: +86 531 6787 9283

www.lmglifts.com



RELIABILITY IN ACTION