

ARTICULATION BOOM LIFT

SPECIFICATIONS

MODELS	AR14JE-2 (AR45JE-2)	
Measurements	Metric	Imperial
Work Height Max.	16m	52'6"
Platform Height Max.	14m	45'11"
Horizontal Outreach	7.73m	25'4"
Up and Over Height	7.26m	23'10"
Platform Length	1.83m	6'
Platform Width	0.76m	2'6"
A Stowed Length	6.66m	21'10"
Transport Length (jib tucked)	5.58m	18'4"
B Overall Width	1.8m	5'11"
C Stowed Height	1.96m	6'5"
Transport Height	2.5m	8'2"
D Wheelbase	2.03m	6'8"
E Ground Clearance	0.18m	7.1"
PRODUCTIVITY		
Platform Capacity (unrestricted)	300kg	661 lbs
Platform Capacity (restricted)	450kg	992 lbs
Max. Platform Occupancy	2(unrestricted)/3(restricted)	
Turntable Rotation	355°	355°
Drive Speed-Stowed	5km/h	3.1mph
Drive Speed-Raised	0.8km/h	0.5mph
Gradeability	30%	30%
Max. Wind Speed	12.5m/s	28mph
Turning Radius-Inside	2.14m	7'
Turning Radius-Outside	4.3m	14'1"
Max. Slope	5°/5°	5°/5°
Tire Type	Foam-filled	
Tire Models	240/55D17.5	
Ground Pressure, Tyres	409.8 kPa	59.4 psi
POWER		
Power Source	80V 125Ah	
HYDRAULIC SYSTEM		
Hydraulic Oil Volume	30L	7.9gal
WEIGHT		
Machine Weight	7,100kg	15,653 lbs

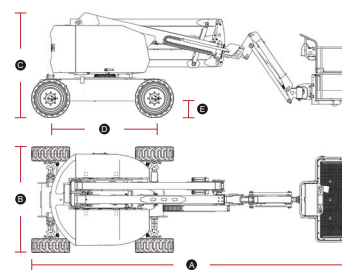
STANDARD FEATURES

- Auto-leveling platform
- Hydraulic rotating platform 180°
- Full proportional joystick control
- Descent alarm
- Flashing beacons
- Horn/Hour meter
- Over-tilt protection system
- Emergency stop button
- Intelligent self-diagnosis function
- Cylinder bellows
- OTA remote upgrade
- Dustproof components
- Over-head anti-collision protection
- Platform tool box
- AC power to platform

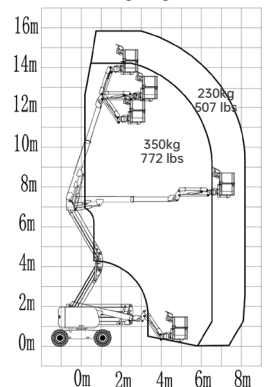
OPTIONAL

- Platform work light
- Half-height mesh platform
- Platform auxiliary guardrail
- Platform pipe rack

MACHINE SIZE



AR14JE-2 Working Range



Please contact LGMG or a local dealer for more details.

LGMG reserves the right to change technical data without prior notice. All photos and pictures in this brochure are for promotional purposes only.