

RELIABILITY IN ACTION



LGMG CHINA FACTORY (HQ)

LINGONG HEAVY MACHINERY CO., LTD.
Address: No. 2676, Kejia Road, Jinan, Shandong, China
Email: sales@lmg.com.cn
Tel: +86 531 6787 9283

LGMG MEXICO FACTORY

LGMG DE MEXICO S.A. DE C.V.
Address: Calle Principal 113, Parque Industrial Roots, Marín, Nuevo León
Email: admin@lmg.mx
Tel: +52 81 8287 6207

LGMG HQ



Information of agent

Please contact LGMG or local dealer for more details.
LGMG reserves the right to change technical data without prior notice. All photos and pictures in this brochure are for promotional purpose only.
Version March 2026.

www.lmglifts.com

EUROPE MARKET



MOBILE ELEVATING WORK PLATFORMS

ELECTRIC
POWERED

DIESEL
POWERED

LINGONG HEAVY MACHINERY CO., LTD.



OUR PROFILE

Founded in 1972, Lingong Group is recognized as one of the top 100 enterprises in China's construction machinery industry and one of the five leading groups in this sector. Lingong Group consists of three core companies: Shandong Lingong Construction Machinery Co., Ltd. (SDLG), Lingong Heavy Machinery Co., Ltd. (LGMG), and Lingong Special Machinery Co., Ltd. The group's business portfolio spans five major areas: construction machinery, mining machinery, aerial work platforms, special machinery, and parts manufacturing.

Located in Jinan, Shandong Province, China, Lingong Heavy Machinery Co., Ltd. (LGMG) is a subsidiary of Lingong Group, with business sections covering aerial work platforms, telehandlers, and mining machinery, etc. LGMG has emerged as a significant player in China's construction machinery industry, ranking among the top 100 global construction machinery manufacturers, the top 30 in China, and the top 5 among Chinese manufacturers of aerial work platforms.

LGMG has established 100% owned subsidiaries in Europe, North America, Australia, Indonesia, Japan, and South Korea to provide better sales, service, and parts support for aerial work platforms and telehandlers to our customers.

In 2023, the construction of the LGMG global manufacturing base in Mexico was completed, and its official operation marks a significant milestone for LGMG in terms of overseas production.

With China and Mexico as its hubs and over 10 overseas subsidiaries as its cornerstones, LGMG is shaping a "Global Ecosystem Economy" model to achieve the localization of sales, R&D, manufacturing, and services overseas, thereby accelerating the pace of LGMG's global development.

CONTENTS

P01-02

Our Profile

P04

Global Sales Network

P06

R&D and Innovation

P08

Product Range

P17-24

RT Scissor Lifts

P27-30

Vertical Mast Lifts

P45-56

Telescopic Boom Lifts

P03

Contents

P05

Production Line

P07

Top Service

P09-16

Scissor Lifts

P25-26

Crawler Scissor Lifts

P31-44

Articulating Boom Lifts

GLOBAL SALES NETWORK



100+ COUNTRIES **3** FACTORIES
1000+ PARTNERS **10+** SUBSIDIARIES

- LOCAL TEAM SUPPORT
- LOCAL MACHINE DELIVERY
- LOCAL SPARE PARTS
- LOCAL FAST AND HIGH-QUALITY SERVICE
- LOCAL TRAINING

LGMG products have obtained multiple international certifications, including CE, ANSI, Australian AS, CSA, KC, JIS, EAC and other major international standards. LGMG's products have been successfully sold to over 100 countries worldwide and have established long-term partnerships with more than 1000 partners, covering key markets such as the United States, Canada, the UK, Germany, the Netherlands, Italy, Spain, South Korea, and Japan.

PRODUCTION LINE



World-Leading Manufacturing Lines

The LGMG manufacturing base in China currently operates seven aerial work platform assembly lines, namely: three scissor lift production lines, one mast lift production line, one telescopic boom lift production line, one articulating boom lift production line, and one telehandler production line, with an annual capacity exceeding 60,000 units.

The LGMG Mexico production plant marks the company's first step into overseas manufacturing, with an annual capacity of 33,000 units. It has fully localized R&D, manufacturing, sales, service, and the supply chain for aerial work products, driving new momentum for global development.

Strictly adhering to the six core principles of its Lean Production System (LPS), LGMG exercises tight control over every process from component welding and painting to machine assembly and final product inspection to maximize production efficiency and ensure high product quality.

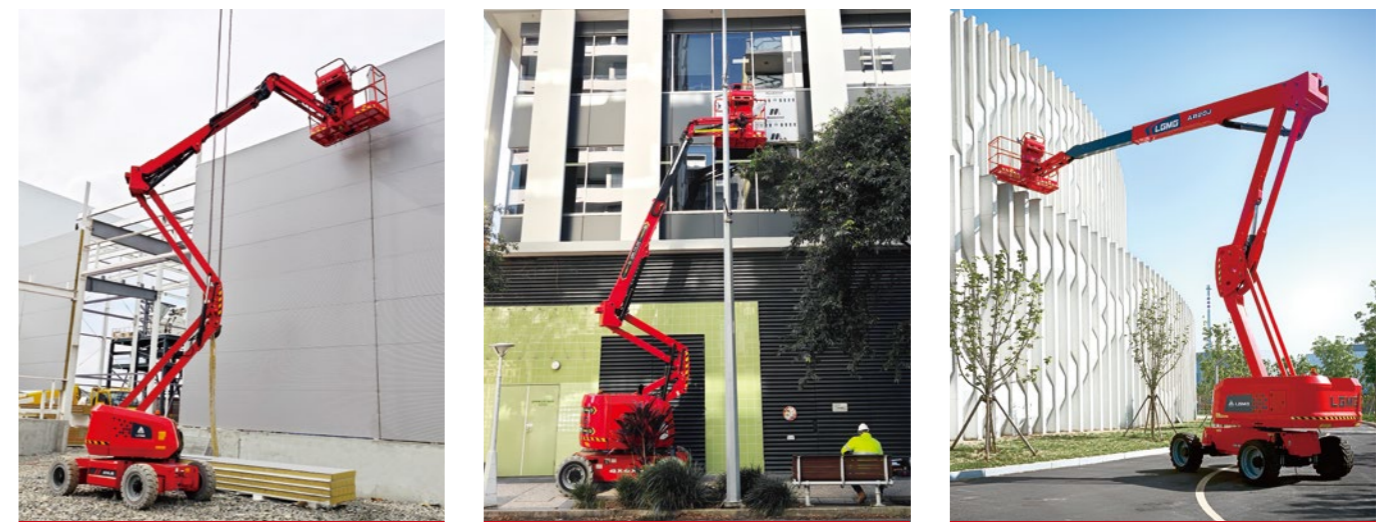


R&D AND INNOVATION

R&D and Innovation as the Core of Global Strategy

LGMG believes that R&D and innovation are key to sustainable business growth. The company has invested heavily in R&D and established a provincial-level innovation center responsible for new product development and component reliability testing. This initiative accelerates technological innovation and consistently enhances product quality. In addition, LGMG has collaborated with one of China's top universities to establish the LGMG Research Institute. The institute aims to address industry challenges, develop cutting-edge technologies, and nurture future technical talent for the aerial work platform industry.

Nowadays, electrification, digitalization, and intelligence have become focal points for industry development. LGMG has successively established R&D centers in countries such as Japan and Mexico to enable efficient collaboration between domestic and international teams, driving LGMG's technological advancements and product innovation in global markets.



TOP SERVICE

LGMG provides support and services before, during, and after sales. We integrate precise services into every aspect closely related to each customer and offer technical support, training programs, warranties, and spare parts sales throughout the entire lifecycle of the machine.



TECHNICAL SUPPORT

- Real-time remote technical support and on-site assistance for fault diagnosis and problem solving.
- Access and download technical documents from the official website, enhancing the convenience of obtaining information.
- Online E-learning system for mastering correct equipment operation and maintenance skills.



TRAINING SUPPORT

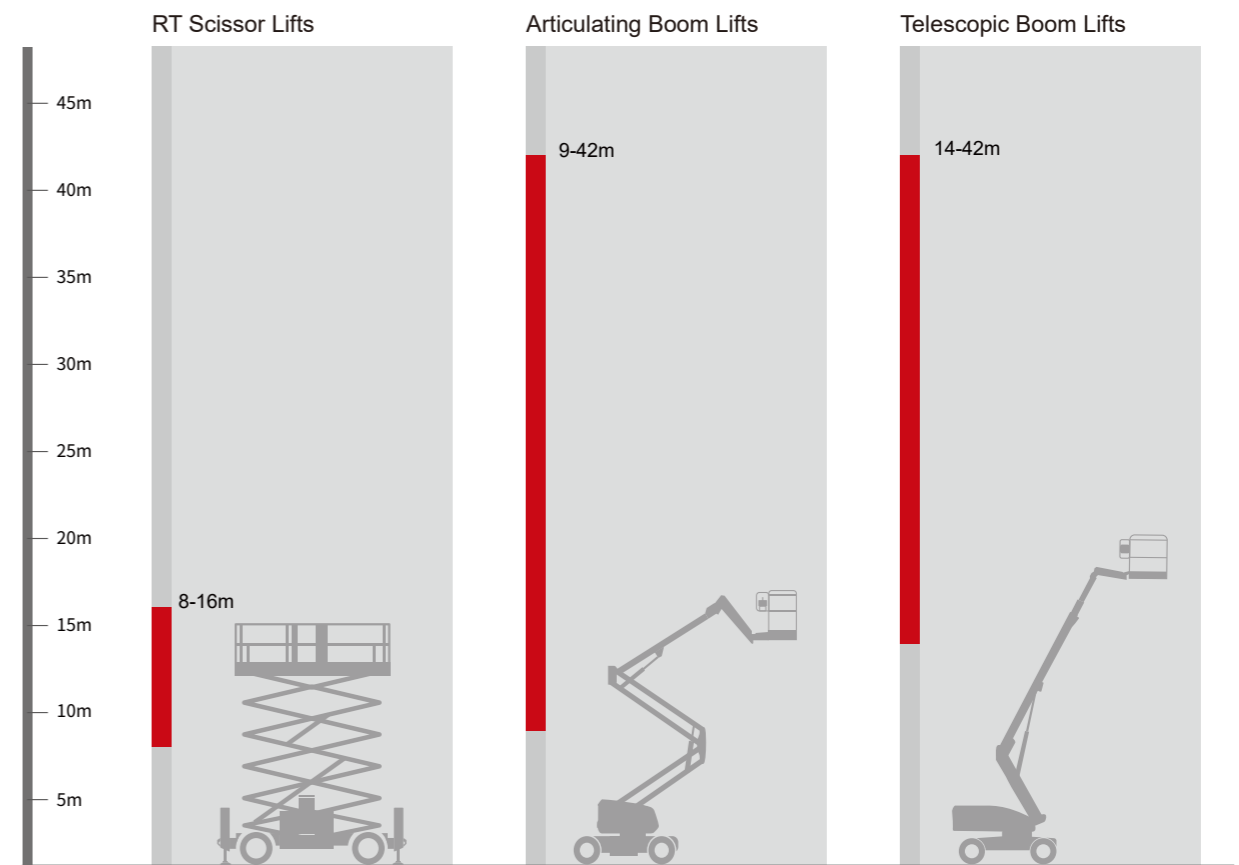
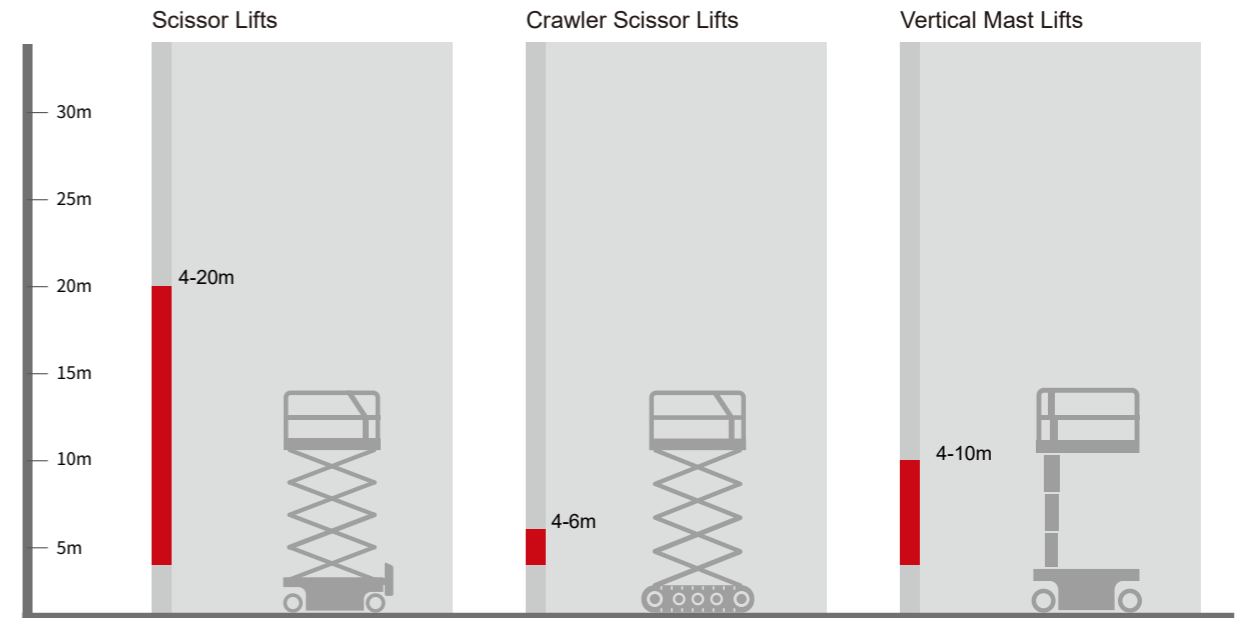
- Regular online and on-site training sessions with hands-on instruction.
- Customized E-learning platform for self-paced learning anytime, anywhere.
- Professional trainers located worldwide, covering key international markets and regions.



PARTS SUPPORT

- LGMG operates 10 overseas subsidiaries and multiple service centers globally, offering reliable spare parts support.
- Provides precise spare parts manuals and a 24/7 online technical support team to address customer inquiries.
- Offers customers a complete range of spare parts information, available for access and download on the official website.
- Establishes a global spare parts WebShop for convenient online ordering.

PRODUCT RANGE





MICRO SCISSOR LIFTS (SS SERIES)



LGMG's mini scissors are ideal solutions for low-level access and space-restricted job sites.

With a short overall machine length, lightweight, and compact design, these machines are perfectly suited for use in most elevators, offering flexibility and ease of movement across different work environments.

- Battery-powered, zero-emission, and quiet drive make the machine environmentally friendly.
- Efficient electric drive system provides longer-lasting performance and better gradeability.
- Exceptional waterproof drive system design provides excellent performance in wet conditions.

SPECIFICATIONS

| MODELS | SS0407ER | | SS0507E | |
|--|----------------------|-----------|----------------------|-----------|
| | Metric | Imperial | Metric | Imperial |
| Measurements | | | | |
| Work Height Max. | 5.6m | 18'5" | 6.3m | 20'8" |
| A Platform Height-Raised | 3.6m | 11'10" | 4.3m | 14'1" |
| B Platform Length | 1.27m | 4'2" | 1.35m | 4'5" |
| C Extension Deck | 0.6m | 2' | 0.6m | 2' |
| D Platform Length with Extension Deck | 1.87m | 6'2" | 1.95m | 6'5" |
| E Platform Width | 0.7m | 2'4" | 0.7m | 2'4" |
| F Overall Length (with ladder) | 1.47m | 4'10" | 1.53m | 5' |
| G Overall Width | 0.76m | 2'6" | 0.81m | 2'8" |
| H Overall Height-Guardrails Up | 2m | 6'7" | 2.15m | 7'1" |
| I Overall Height-Guardrails Down | 1.57m | 5'2" | 1.754m | 5'9" |
| J Wheelbase | 1.05m | 3'5" | 1.12m | 3'8" |
| Ground Clearance (Stowed/Raised) | 50/20mm | 2"/0.8" | 50/16mm | 2"/0.6" |
| PRODUCTIVITY | | | | |
| Max. Platform Occupants | 2(in) / 1(out) | | 2(in) / 1(out) | |
| Platform Capacity | 240kg | 530 lbs | 230kg | 507 lbs |
| Platform Capacity-Extension Deck | 100kg | 221 lbs | 113kg | 249 lbs |
| Drive Height | Full Height | | Full Height | |
| Gradeability-Stowed | 30% | | 25% | |
| Min. Turning Radius | 1.55m | 5'1" | 1.5m | 4'11" |
| Raise/Lower Speed | 25s / 18s | | 25s / 20s | |
| Brakes | Rear-wheel Brake | | Front-wheel Brake | |
| Drive Mode | 2x2 | | 2x2 | |
| Tire Type | Solid Non-marking | | Solid Non-marking | |
| Tire Size | 230x80mm | 9"x3" | 230x80mm | 9"x3" |
| POWER | | | | |
| Power Source | 24V(2x12V) 100Ah AGM | | 24V(2x12V) 150Ah FLA | |
| HYDRAULIC SYSTEM | | | | |
| Hydraulic Oil Capacity | 4L | 1.1gal | 4.5L | 1.2gal |
| WEIGHT | | | | |
| Machine Weight | 880kg | 1,940 lbs | 985kg | 2,172 lbs |

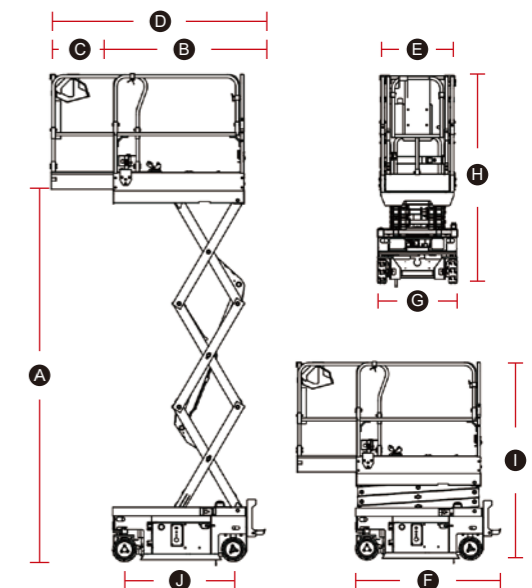
STANDARD FEATURES

- Proportional controls
- Foldable guardrail
- Emergency stop switch
- Manual brake release
- Emergency descent
- Pothole guard
- All motions alarm
- Full-height drive
- Swing-out component tray
- Self-lock entry gate
- Tilt alarm with lift cut-out
- Overload sensing system
- Descent alarm with flashing beacon
- Intelligent diagnostic system

OPTIONS

- AC power to platform
- Telematics
- Voice alarm system
- Anti-collision protection
- Biodegradable hydraulic oil

MACHINE SIZE



LGMG SCISSOR LIFTS

ENHANCED STRUCTURE NEW SYSTEM DESIGN



Upgraded Structure

- Enhanced machine stability to ensure security and stability during use.
- The structural components are designed to be lightweight yet solid and durable, effectively reducing energy consumption.
- Improved component modularity and standardization to achieve diversified optimization.

Upgraded Electrical System

- Equipped with a Permanent Magnet Synchronous Motor (PMSM), integrating the motor and controller into a single (3-in-1), maintenance-free unit that significantly boosts efficiency while reducing wear and maintenance costs.
- Operates with universal electrical interfaces for compatibility across various application scenarios.
- Multiple battery options: FLA, AGM, and lithium.

Upgraded Hydraulic System

- Spool valve as main valve: energy-saving and highly efficient with strong anti-pollution capabilities to ensure stable system operation.
- Optimized pipeline layout to reduce energy loss and leakage risk while improving system reliability and durability.

SPECIFICATIONS

| MODELS | The Series | | | | | | | |
|--|-------------------|------------|---------------------|-------------------------|--------------------|-------------------------|-------------------|-----------|
| | S0607E-2 | | S0808E-2 | | S1008E-2 | | S0812E-2 | |
| Measurements | Metric | Imperial | Metric | Imperial | Metric | Imperial | Metric | Imperial |
| Work Height Max. | 7.8m | 25'7" | 9.8m/8m (in/out) | 32'2"/26'3" (in/out) | 12m/9m (in/out) | 39'4"/29'6" (in/out) | 10m | 32'10" |
| A Platform Height-Raised | 5.8m | 19' | 7.8m/6m (in/out) | 25'7"/19'8" (in/out) | 10m/7m (in/out) | 32'10"/23' (in/out) | 8m | 26'3" |
| B Platform Length | 1.64m | 5'5" | 2.26m | 7'5" | 2.26m | 7'5" | 2.26m | 7'5" |
| C Extension Deck | 0.9m | 2'11" | 0.9m | 2'11" | 0.9m | 2'11" | 0.9m | 2'11" |
| D Platform Length with Extension Deck | 2.54m | 8'4" | 3.16m | 10'4" | 3.16m | 10'4" | 3.16m | 10'4" |
| E Platform Width | 0.73m | 2'5" | 0.79m | 2'7" | 0.79m | 2'7" | 1.12m | 3'8" |
| F Overall Length | 1.837m | 6' | 2.44m | 8' | 2.48m | 8'2" | 2.43m | 8' |
| G Overall Width | 0.79m | 2'7" | 0.83m | 2'9" | 0.83m | 2'9" | 1.19m | 3'11" |
| H Overall Height-Guardrails Up | 2m | 6'7" | 2.315m | 7'7" | 2.45m | 8' | 2.36m | 7'9" |
| I Overall Height-Guardrails Down | 1.666m | 5'6" | 1.95m | 6'5" | 2.05m | 6'9" | 1.55m | 5'1" |
| J Wheelbase | 1.35m | 4'5" | 1.86m | 6'1" | 1.87m | 6'2" | 1.85m | 6'1" |
| Ground Clearance(Stowed/Raised) | 55/19mm | 2.2"/ 0.7" | 100/20mm | 4"/ 0.8" | 100/20mm | 4"/ 0.8" | 100/20mm | 4"/ 0.8" |
| PRODUCTIVITY | | | | | | | | |
| Max. Platform Occupants | 2 (in) / 1(out) | | 2 (in) / 1(out) | | 2 (in) / 1(out) | | 2 (in) / 1(out) | |
| Platform Capacity | 230kg | 507 lbs | 230kg | 507 lbs | 250kg | 551 lbs | 450kg | 992 lbs |
| Platform Capacity-Extension Deck | 120kg | 265 lbs | 120kg | 265 lbs | 120kg | 265 lbs | 120kg | 265 lbs |
| Drive Height Max. | Full Height | | Full Height | | Full Height | | Full Height | |
| Gradeability-Stowed | 25% | | 25% | | 25% | | 25% | |
| Min. Turning Radius | 1.8m | 5'11" | 2.2m | 7'3" | 2.5m | 8'2" | 2.7m | 8'10" |
| Raise/Lower Speed | 16s / 22s | | 31s / 38s | | 58s / 50s | | 35s / 40s | |
| Brakes | Front-wheel Brake | | Front-wheel Brake | | Front-wheel Brake | | Front-wheel Brake | |
| Drive Mode | 2x2 | | 2x2 | | 2x2 | | 2x2 | |
| Tire Type | Solid Non-marking | | | | | | | |
| Tire Size | 323x100mm | 13"x4" | 380x130mm | 15"x5" | 380x130mm | 15"x5" | 380x130mm | 15"x5" |
| Ground Pressure, Tyres | 941 kPa | 136.5 psi | 983 kPa | 142.6 psi | 986.1 kPa | 143 psi | 1119 kPa | 162.3 psi |
| POWER | | | | | | | | |
| Lead-acid Battery | 24V (2x12V),102Ah | | 24V (2x12V),130Ah | | 24V (4x6V),185Ah | | 24V (4x6V),190Ah | |
| HYDRAULIC SYSTEM | | | | | | | | |
| Hydraulic Oil Capacity | 5L | 1.3gal | 11L | 2.9gal | 19L | 5gal | 15L | 4gal |
| WEIGHT | | | | | | | | |
| Machine Weight | 1,550kg | 3,417 lbs | 2,160kg | 4,762 lbs | 3,200kg | 7,055lbs | 2,260kg | 4,982 lbs |

SPECIFICATIONS

| MODELS | The Series | | | | | |
|--|-------------------|-----------|----------------------|--------------------------|-----------------------|---------------------------|
| | S1012E-2 | | S1212E-2 | | S1413E-2 | |
| Measurements | Metric | Imperial | Metric | Imperial | Metric | Imperial |
| Work Height Max. | 12m | 39'4" | 14m/9.5m (in/out) | 45'11"/31'2" (in/out) | 15.8m/10m (in/out) | 51'10"/32'10" (in/out) |
| A Platform Height-Raised | 10m | 32'10" | 12m/7.5m (in/out) | 39'4"/24'7" (in/out) | 13.8m/8m (in/out) | 45'3"/26'3" (in/out) |
| B Platform Length | 2.26m | 7'5" | 2.26m | 7'5" | 2.64m | 8'8" |
| C Extension Deck | 0.9m | 2'11" | 0.9m | 2'11" | 0.9m | 2'11" |
| D Platform Length with Extension Deck | 3.16m | 10'4" | 3.16m | 10'4" | 3.54m | 11'7" |
| E Platform Width | 1.12m | 3'8" | 1.12m | 3'8" | 1.12m | 3'8" |
| F Overall Length | 2.43m | 8' | 2.43m | 8' | 2.81m | 9'3" |
| G Overall Width | 1.19m | 3'11" | 1.19m | 3'11" | 1.3m | 4'3" |
| H Overall Height-Guardrails Up | 2.49m | 8'2" | 2.63m | 8'8" | 2.74m | 9' |
| I Overall Height-Guardrails Down | 1.68m | 5'6" | 1.8m | 5'11" | 1.98m | 6'6" |
| J Wheelbase | 1.85m | 6'1" | 1.85m | 6'1" | 2.22m | 7'3" |
| Ground Clearance(Stowed/Raised) | 100/20mm | 4"/ 0.8" | 100/20mm | 4"/ 0.8" | 105/20mm | 4.1"/ 0.8" |
| PRODUCTIVITY | | | | | | |
| Max. Platform Occupants (in/out) | 2 (in) / 1(out) | | 2 (in) / 1(out) | | 2 (in) / 1(out) | |
| Platform Capacity | 320kg | 705 lbs | 320kg | 705 lbs | 320kg | 705 lbs |
| Platform Capacity-Extension Deck | 120kg | 265 lbs | 120kg | 265 lbs | 120kg | 265 lbs |
| Drive Height Max. | Full Height | | Full Height | | Full Height | |
| Gradeability-Stowed | 25% | | 25% | | 25% | |
| Min. Turning Radius | 2.7m | 8'10" | 2.7m | 8'10" | 2.95m | 9'8" |
| Raise/Lower Speed | 58s / 50s | | 65s / 53s | | 80s / 62s | |
| Brakes | Front-wheel Brake | | Front-wheel Brake | | Front-wheel Brake | |
| Drive Mode | 2x2 | | 2x2 | | 2x2 | |
| Tire Type | Solid Non-marking | | | | | |
| Tire Size | 380x130mm | 15"x5" | 380x130mm | 15"x5" | 380x130mm | 15"x5" |
| Ground Pressure, Tyres | 1323 kPa | 192 psi | 1264 kPa | 183 psi | 1350 kPa | 196 psi |
| POWER | | | | | | |
| Lead-acid Battery | 24V (4x6V),190Ah | | 24V (4x6V),190Ah | | 24V (4x6V),220Ah | |
| HYDRAULIC SYSTEM | | | | | | |
| Hydraulic Oil Capacity | 19L | 5gal | 19L | 5gal | 24.5L | 6.5gal |
| WEIGHT | | | | | | |
| Machine Weight | 2,925kg | 6,449 lbs | 2,940kg | 6,482 lbs | 3,430kg | 7,562 lbs |



SPECIFICATIONS

| MODELS | The S2 Series | |
|---------------------------------------|-------------------|------------|
| | S2012E-2 | |
| Measurements | Metric | Imperial |
| Work Height Max. | 22m | 72'2" |
| Ⓐ Platform Height - Raised | 20m | 65'7" |
| Ⓑ Platform Length | 4.3m | 14'1" |
| Ⓒ Extension Deck | 1.8m | 5'11" |
| Ⓓ Platform Length with Extension Deck | 6.1m | 20' |
| Ⓔ Platform Width | 1.19m | 3'11" |
| Ⓕ Overall Length | 4.7m | 15'5" |
| Ⓖ Overall Width | 1.25m | 4'1" |
| Ⓗ Overall Height - Guardrails Up | 3.82m | 12'6" |
| Ⓘ Overall Height - Guardrails Down | 2.925m | 9'7" |
| Ⓚ Wheelbase | 3.23m | 10'7" |
| Ground Clearance | 200mm | 7.9" |
| PRODUCTIVITY | | |
| Max. Platform Occupants | 4(in) / 4(out) | |
| Platform Capacity | 750kg | 1,653 lbs |
| Platform Capacity - Extension Deck | 750kg | 1,653 lbs |
| Drive Height | Full Height (in) | |
| Gradeability-Stowed | 25% | |
| Min. Turning Radius | 1.6m | 5'3" |
| Raise/Lower Speed | 80s / 80s | |
| Brakes | Four-wheel Brake | |
| Drive Mode | 4x4 | |
| Tire Type | Solid Non-marking | |
| Tire Size | 715x257mm | 28"x10" |
| POWER | | |
| Power Source | 78V (13x6V),310Ah | |
| HYDRAULIC SYSTEM | | |
| Hydraulic Oil Capacity | 150L | 39.6gal |
| WEIGHT | | |
| Machine Weight | 12,350kg | 27,227 lbs |

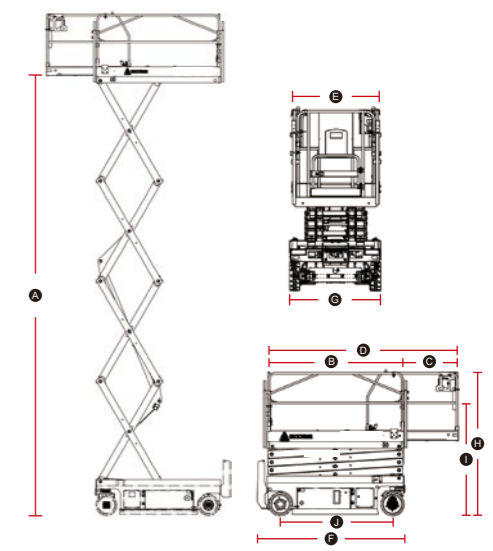
STANDARD FEATURES

- Proportional controls
- Foldable guardrail
- Emergency descent
- Emergency stop button
- Tubing explosion-proof system
- Intelligent diagnostic system
- Flashing beacons
- Automatic braking system
- Over-tilt protection system
- Charging protection system
- Safety arm for troubleshooting
- Horn/Hour meter
- Standard transport forklift Holes
- Pothole guard
- Telematics
- Swing-out component tray
- Alarm
- Manual brake release
- Overload sensing system

OPTIONS

- AC power to platform
- Anti-collision protection

MACHINE SIZE



LGMG RT SCISSOR LIFTS



ENHANCED SAFETY ROBUST POWER

Improved Performance, and Enhanced Safety

- The structural components are designed to be lightweight yet solid and durable, effectively reducing energy consumption, and improving working time.
- Modularized design improves the commonality of components within the same product range.

Robust Power, and Excellent Rough Terrain Performance

- The powertrain system provides faster response, smooth transmission, and high transmission efficiency.
- Oscillating axles and a four-wheel-drive system design provide outstanding rough terrain capability.

Higher Efficiency, and Intelligent Operations

- A compact and reasonable electrical system layout, excellent matching performance, and higher efficiency. The large LED display ensures safe and convenient operation of the machine.
- Energy-saving and highly efficient hydraulic system with strong anti-pollution capabilities to ensure stable system operation and reduced maintenance costs.

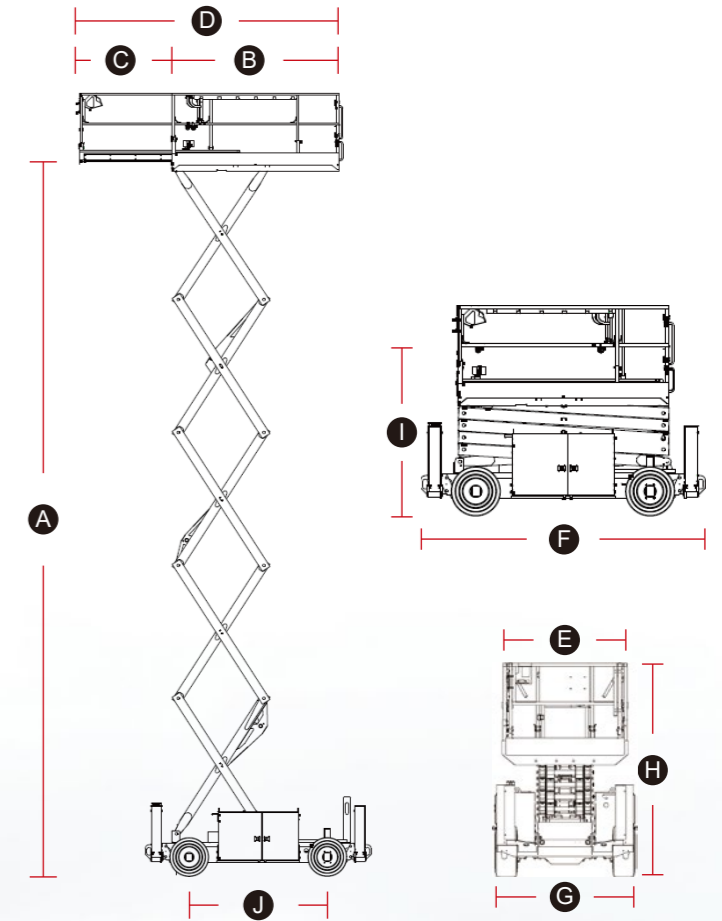
SPECIFICATIONS

The **SR** Series

| MODELS | SR0818E-2 | | SR1018E-2 | | SR1218E-2 | | SR1418E-2 | | SR1623E-2 | |
|--|------------------|-----------|------------------|-----------|------------------|------------|------------------|------------|-------------------------|------------|
| Measurements | Metric | Imperial | Metric | Imperial | Metric | Imperial | Metric | Imperial | Metric | Imperial |
| Work Height Max. | 9.8m | 32'2" | 12m | 39'4" | 14m | 45'11" | 15.8m | 51'10" | 18m | 59'1" |
| A Platform Height-Raised | 7.8m | 25'7" | 10m | 32'10" | 12m | 39'4" | 13.8m | 45'3" | 16m | 52'6" |
| B Platform Length | 2.79m | 9'2" | 2.79m | 9'2" | 2.79m | 9'2" | 2.79m | 9'2" | 4.81m | 15'9" |
| C Extension Deck | 1.52m | 5' | 1.52m | 5' | 1.52m | 5' | 1.52m | 5' | 1.45m/1.14m | 4'9"/3'9" |
| D Platform Length with Extension Deck | 4.31m | 14'2" | 4.31m | 14'2" | 4.31m | 14'2" | 4.31m | 14'2" | 7.4m | 24'3" |
| E Platform Width | 1.6m | 5'3" | 1.6m | 5'3" | 1.6m | 5'3" | 1.6m | 5'3" | 1.83m | 6' |
| F Overall Length | 3.76m | 12'4" | 3.76m | 12'4" | 3.76m | 12'4" | 3.76m | 12'4" | 4.9m | 16'1" |
| G Overall Width | 1.79m | 5'10" | 1.79m | 5'10" | 1.79m | 5'10" | 1.84m | 6' | 2.3m | 7'7" |
| H Overall Height-Guardrails Up | 2.52m | 8'3" | 2.57m | 8'5" | 2.72m | 8'11" | 2.85m | 9'4" | 3.23m | 10'7" |
| I Overall Height-Guardrails Down | 1.83m | 6' | 1.88m | 6'2" | 2.03m | 6'8" | 2.12m | 6'11" | 2.53m | 8'4" |
| J Wheelbase | 2.3m | 7'7" | 2.3m | 7'7" | 2.3m | 7'7" | 2.3m | 7'7" | 2.85m | 9'4" |
| Ground Clearance | 0.215m | 8.5" | 0.215m | 8.5" | 0.215m | 8.5" | 0.215m | 8.5" | 0.255m | 10" |
| PRODUCTIVITY | | | | | | | | | | |
| Max. Platform Occupants | 4(in) / 4(out) | | 4(in) / 2(out) | | 3(in) / 2(out) | | 2(in) / 2(out) | | 4(in) / 4(out) | |
| Platform Capacity | 680kg | 1,500 lbs | 454kg | 1,000 lbs | 365kg | 805 lbs | 365kg | 805 lbs | 680kg | 1,500 lbs |
| Platform Capacity-Extension Deck | 140kg | 310 lbs | 140kg | 310 lbs | 140kg | 310 lbs | 140kg | 310 lbs | 230kg | 507 lbs |
| Drive Height Max. | Full Height | | Full Height | | Full Height | | Full Height | | 9m | 29'6" |
| Gradeability-Stowed | 35% | | 35% | | 35% | | 35% | | 40% | |
| Min. Turning Radius | 3m | 9'10" | 3m | 9'10" | 3m | 9'10" | 3m | 9'10" | 3.6m | 11'10" |
| Raise/Lower Speed | 35s / 30s | | 51s / 46s | | 61s / 55s | | 80s / 60s | | 60s / 55s | |
| Brakes | Rear-wheel Brake | | Rear-wheel Brake | | Rear-wheel Brake | | Rear-wheel Brake | | Rear-wheel Brake | |
| Drive Mode | 4x2 | | 4x2 | | 4x2 | | 4x2 | | 4x2 | |
| Tire Type | Foam-filled | | | | Solid | | | | Foam-filled Non-marking | |
| Tire Size | 663x283mm | 26"x11" | 663x283mm | 26"x11" | 663x283mm | 26"x11" | 663x283mm | 26"x11" | 812x305mm | 32"x12" |
| Ground Pressure, Tyres | 471.5 kPa | 68.4 psi | 469.6 kPa | 68.1 psi | 499.1 kPa | 72.4 psi | 635.6 kPa | 92.2 psi | 831 kPa | 120.5 psi |
| POWER | | | | | | | | | | |
| Power Source | 72V 100Ah | | 72V 100Ah | | 72V 100Ah | | 72V 120Ah | | 77.28V 228Ah | |
| HYDRAULIC SYSTEM | | | | | | | | | | |
| Hydraulic Oil Capacity | 50L | 13.2gal | 50L | 13.2gal | 50L | 13.2gal | 50L | 13.2gal | 80L | 21.1gal |
| WEIGHT | | | | | | | | | | |
| Machine Weight | 4,190kg | 9,237 lbs | 4,400kg | 9,700 lbs | 4,790kg | 10,560 lbs | 6,200kg | 13,669 lbs | 8,100kg | 17,857 lbs |

STANDARD FEATURES

- Proportional control
- Foldable guardrail
- Emergency descent
- Tubing explosion-proof system
- Intelligent diagnostic system
- Flashing beacons
- Floating function
- Automatic braking system
- Over-tilt protection system
- Safety arm for troubleshooting
- Telematics
- Alarm
- One-way platform extension deck
- Hydraulic outriggers
- AC power to platform





SPECIFICATIONS

| MODELS | SR0818D | | SR1018D | | SR1218D | |
|---------------------------------------|----------------------|-----------|----------------------|-----------|----------------------|------------|
| | Metric | Imperial | Metric | Imperial | Metric | Imperial |
| Measurements | | | | | | |
| Work Height Max. | 9.7m | 31'10" | 11.7m | 38'5" | 13.9m | 45'7" |
| Ⓐ Platform Height-Raised | 7.7m | 25'3" | 9.7m | 31'10" | 11.9m | 39'1" |
| Ⓑ Platform Length | 2.79m | 9'2" | 2.79m | 9'2" | 2.79m | 9'2" |
| Ⓒ Extension Deck | 1.52m | 5' | 1.52m | 5' | 1.52m | 5' |
| Ⓓ Platform Length with Extension Deck | 4.31m | 14'2" | 4.31m | 14'2" | 4.31m | 14'2" |
| Ⓔ Platform Width | 1.6m | 5'3" | 1.6m | 5'3" | 1.6m | 5'3" |
| Ⓕ Overall Length | 3.76m | 12'4" | 3.76m | 12'4" | 3.76m | 12'4" |
| Ⓖ Overall Width | 1.79m | 5'10" | 1.79m | 5'10" | 1.79m | 5'10" |
| Ⓖ Overall Height-Guardrails Up | 2.58m | 8'6" | 2.55m | 8'4" | 2.7m | 8'10" |
| Ⓖ Overall Height-Guardrails Down | 1.92m | 6'4" | 1.89m | 6'2" | 2.04m | 6'8" |
| Ⓖ Wheelbase | 2.29m | 7'6" | 2.29m | 7'6" | 2.29m | 7'6" |
| Ground Clearance | 0.23m | 9" | 0.23m | 9" | 0.23m | 9" |
| PRODUCTIVITY | | | | | | |
| Max. Platform Occupants | 4(in) / 4(out) | | 4(in) / 2(out) | | 3(in) / 2(out) | |
| Platform Capacity | 680kg | 1,500 lbs | 454kg | 1,000 lbs | 365kg | 805 lbs |
| Platform Capacity-Extension Deck | 140kg | 310 lbs | 140kg | 310 lbs | 140kg | 310 lbs |
| Drive Height | Full Height | | Full Height | | Full Height | |
| Gradeability-Stowed | 35% | | 35% | | 35% | |
| Min. Turning Radius | 4.75m | 15'7" | 4.75m | 15'7" | 4.75m | 15'7" |
| Raise/Lower Speed | 35s / 30s | | 39s / 46s | | 61s / 55s | |
| Brakes | Rear-wheel Brake | | Rear-wheel Brake | | Rear-wheel Brake | |
| Drive Mode | 4x2 | | 4x2 | | 4x2 | |
| Tire Type | Foam-filled | | Foam-filled | | Foam-filled | |
| Tire Size | 663x283mm | 26"x11" | 663x283mm | 26"x11" | 663x283mm | 26"x11" |
| Ground Pressure, Tyres | 490.41 kPa | 71.1 psi | 524.48 kPa | 76.1 psi | 575.46 kPa | 83.5 psi |
| POWER | | | | | | |
| Power Source | Kubota 15.7kW/21.1hp | | Kubota 15.7kW/21.1hp | | Kubota 15.7kW/21.1hp | |
| Fuel Tank Capacity | 53L | 14gal | 53L | 14gal | 53L | 14gal |
| HYDRAULIC SYSTEM | | | | | | |
| Hydraulic Oil Capacity | 50L | 13.2gal | 50L | 13.2gal | 50L | 13.2gal |
| WEIGHT | | | | | | |
| Machine Weight | 4,170kg | 9,193 lbs | 4,330kg | 9,545 lbs | 5,080kg | 11,200 lbs |

SPECIFICATIONS

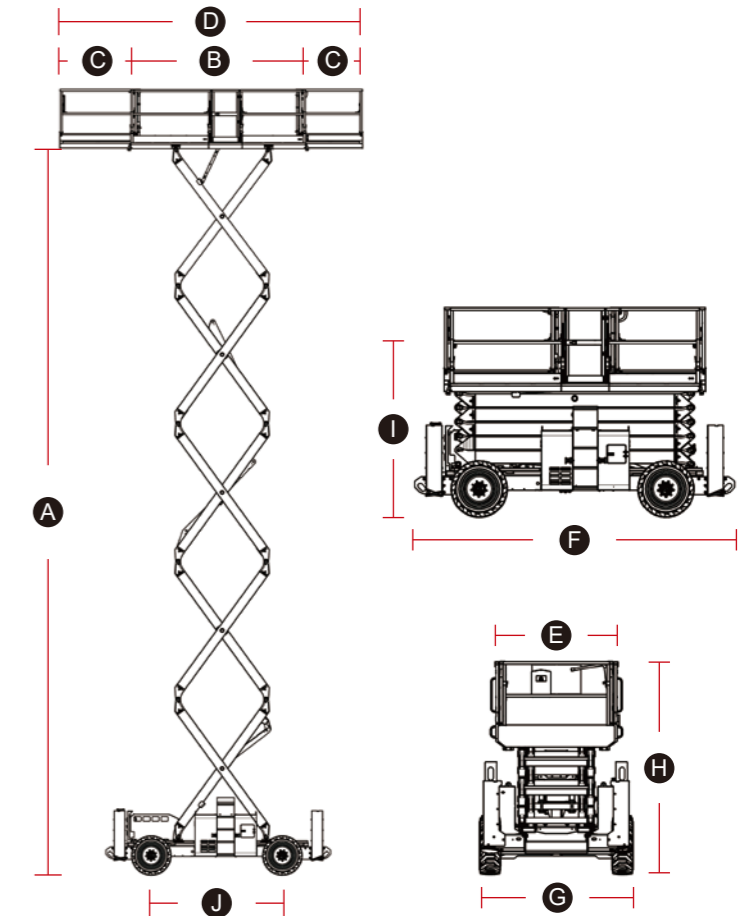
| MODELS | SR1023D | | SR1323D | | SR1623D | |
|--|---|------------|---|------------|---|------------|
| | Metric | Imperial | Metric | Imperial | Metric | Imperial |
| Measurements | | | | | | |
| Work Height Max. | 12m | 39'4" | 15m | 49'3" | 17.9m | 58'9" |
| A Platform Height-Raised | 10m | 32'10" | 13m | 42'8" | 15.9m | 52'2" |
| B Platform Length | 4.81m | 15'9" | 4.81m | 15'9" | 4.81m | 15'9" |
| C Extension Deck | 1.45/1.14m | 4'9"/3'9" | 1.45/1.14m | 4'9"/3'9" | 1.45/1.14m | 4'9"/3'9" |
| D Platform Length with Extension Deck | 7.4m | 24'3" | 7.4m | 24'3" | 7.4m | 24'3" |
| E Platform Width | 1.83m | 6' | 1.83m | 6' | 1.83m | 6' |
| F Overall Length | 4.9m | 16'1" | 4.9m | 16'1" | 4.9m | 16'1" |
| G Overall Width | 2.3m | 7'7" | 2.3m | 7'7" | 2.3m | 7'7" |
| H Overall Height-Guardrails Up | 2.74m | 9' | 2.96m | 9'9" | 3.18m | 10'5" |
| I Overall Height-Guardrails Down | 2.06m | 6'9" | 2.28m | 7'6" | 2.5m | 8'2" |
| J Wheelbase | 2.85m | 9'4" | 2.85m | 9'4" | 2.85m | 9'4" |
| Ground Clearance | 0.23m | 9" | 0.23m | 9" | 0.23m | 9" |
| PRODUCTIVITY | | | | | | |
| Max. Platform Occupants | 7(in) / 7(out) | | 7(in) / 7(out) | | 4(in) / 4(out) | |
| Platform Capacity | 1,100kg | 2,430 lbs | 680kg | 1,500 lbs | 680kg | 1,500 lbs |
| Platform Capacity-Extension Deck | 230kg | 510 lbs | 230kg | 510 lbs | 230kg | 510 lbs |
| Drive Height | Full Height | | Full Height | | 8.5m | 27'11" |
| Gradeability-Stowed | 40% | | 40% | | 40% | |
| Min. Turning Radius | 5.33m | 17'6" | 5.33m | 17'6" | 5.33m | 17'6" |
| Raise/Lower Speed | 45s / 45s | | 55s / 55s | | 55s / 55s | |
| Brakes | Four-wheel Brake | | Four-wheel Brake | | Four-wheel Brake | |
| Drive Mode | 4x2 | | 4x2 | | 4x2 | |
| Tire Type | Solid | | Solid | | Solid | |
| Tire Size | 835x290mm | 33"x11" | 835x290mm | 33"x11" | 835x290mm | 33"x11" |
| Ground Pressure, Tyres | 887.37 kPa | 128.7 psi | 887.71 kPa | 128.75 psi | 888.31 kPa | 128.84 psi |
| POWER | | | | | | |
| Power Source | Deutz 36.4kW/48.8hp Kubota 36kW/48.3hp | | Deutz 36.4kW/48.8hp Kubota 36kW/48.3hp | | Deutz 36.4kW/48.8hp Kubota 36kW/48.3hp | |
| Fuel Tank Capacity | 100L | 26.4gal | 100L | 26.4gal | 100L | 26.4gal |
| HYDRAULIC SYSTEM | | | | | | |
| Hydraulic Oil Capacity | 140L | 37gal | 140L | 37gal | 140L | 37gal |
| WEIGHT | | | | | | |
| Machine Weight | 6,980kg | 15,400 lbs | 7,460kg | 16,450 lbs | 8,200kg | 18,080 lbs |

STANDARD FEATURES

- Proportional controls
- Foldable guardrail
- Emergency descent
- Tubing explosion-proof system
- Intelligent diagnostic system
- Flashing beacons
- Floating function
- Automatic braking system
- Over-tilt protection system
- Safety arm for troubleshooting
- Telematics
- Alarm
- Hydraulic outriggers
- AC power to platform

OPTIONAL

- Foam-filled Non-marking
- Solid Non-marking





CRAWLER SCISSOR LIFTS



LGMG's crawler scissor lift excels in challenging any complex environments, offering outstanding performance on slopes and uneven ground.

- With a compact size and the ability to turn 360 degrees on the spot, the machine is highly maneuverable, allowing for precise operation in narrow space.
- The crawler chassis has a large contact area with ground to provide superior obstacle-surpassing capabilities while maintaining smooth operation and stability.
- The innovative crawler design allows a uniform distribution of total weight to lower ground pressure and prevent damage.

SPECIFICATIONS

The **2** Series

| MODELS | SC0407E-2 | | SC0610E-2 | |
|---|-----------|----------|--------------------|-----------------------|
| Measurements | Metric | Imperial | Metric | Imperial |
| Work Height Max. | 6.5m | 21'4" | 8.8m/7.5m (in/out) | 28'10"/24'7" (in/out) |
| A Platform Height - Raised | 4.5m | 14'9" | 6.8m/5.5m (in/out) | 22'4"/18'1" (in/out) |
| B Platform Length | 1.29m | 4'3" | 1.895m | 6'3" |
| C Platform Width | 0.7m | 2'4" | 0.73m | 2'5" |
| D Overall Length | 1.495m | 4'11" | 2.052m | 6'9" |
| E Overall Width | 0.78m | 2'7" | 0.99m | 3'3" |
| F Overall Height - Guardrails Up | 1.995m | 6'7" | 2.192m | 7'2" |
| G Extension Deck | 0.6m | 2' | 0.9m | 2' |
| Ground Clearance | 80mm | 3" | 115mm | 4.5" |

PRODUCTIVITY

| | | | | |
|------------------------------------|------------------|---------|------------------|---------|
| Max. Platform Occupancy | 1(in) / 0(out) | | 2(in) / 1(out) | |
| Platform Capacity | 200kg | 441 lbs | 250kg | 551 lbs |
| Platform Capacity - Extension Deck | 115kg | 254 lbs | 120kg | 265 lbs |
| Gradeability-Stowed | 30% | | 30% | |
| Min. Turning Radius | In-situ steering | | In-situ steering | |
| Raise/Lower Speed | 20s/20s | | 36s/36s | |

POWER

| | | | | |
|--------------|----------|--|-----------|--|
| Power Source | 24V 95Ah | | 24V 200Ah | |
|--------------|----------|--|-----------|--|

HYDRAULIC SYSTEM

| | | | | |
|------------------------|----|--------|------|---------|
| Hydraulic Oil Capacity | 4L | 1.1gal | 5.5L | 1.45gal |
|------------------------|----|--------|------|---------|

WEIGHT

| | | | | |
|----------------|-------|-----------|---------|-----------|
| Machine Weight | 800kg | 1,764 lbs | 1,600kg | 3,527 lbs |
|----------------|-------|-----------|---------|-----------|

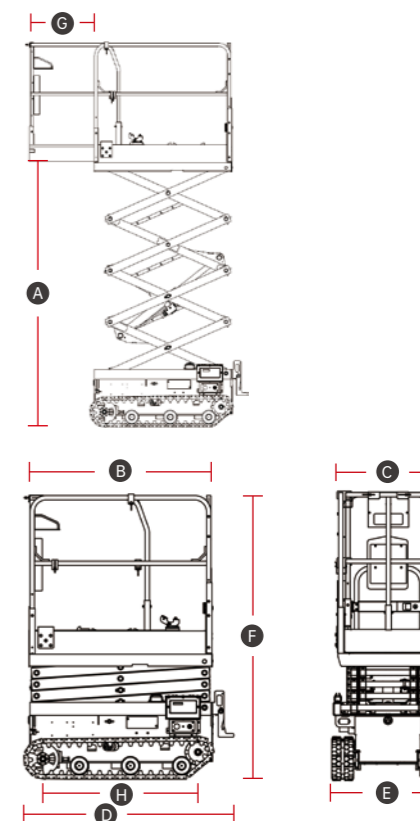
STANDARD FEATURES

- Proportional controls
- Emergency stop device
- Emergency descent
- Self-lock entry gate
- Tilt alarm with lift cut-out
- Overload sensing system
- Descent alarm with flashing beacon
- All motions alarm
- Intelligent diagnostic system
- Foldable ladder
- Non-marking crawlers
- Maintenance-free battery
- AC power to platform

OPTIONS

- Anti-collision protection
- Overload sensing system
- Telematics
- Biodegradable hydraulic oil

MACHINE SIZE





VERTICAL MAST LIFTS



M0407TE/M0608TE

LGMG's vertical mast lifts feature compact size and high maneuverability, providing excellent agility and convenience in constricted areas.

- With narrow chassis and low stowed height, the machine can be transported easily through doorways and in passenger elevators.
- Small inside turning radius allows for flexible use in narrow spaces, improving work efficiency.
- One-side extension deck enlarges the working scope and enhances productivity.

SPECIFICATIONS

| MODELS | M0407TE | | M0608TE | |
|---------------------------|------------|----------|--------------------|------------------------|
| Measurements | Metric | Imperial | Metric | Imperial |
| Working Height Max. | 5.7m | 18'8" | 7.6/6.2m in/out | 24'11"/20'4" in/out |
| Platform Height | 3.7m | 12'2" | 5.6/4.2m in/out | 18'4"/13'9" in/out |
| Platform Size | 1.33x0.75m | 52"x30" | 0.98x0.76m | 39"x30" |
| A Overall Length | 1.39m | 4'7" | 1.4m | 4'7" |
| B Overall Width | 0.76m | 2'6" | 0.79m | 2'7" |
| C Overall Height (Stowed) | 1.69m | 5'6" | 1.99m | 6'6" |
| D Wheelbase | 1.04m | 3'5" | 1.15m | 3'9" |
| E Extension Deck | 0.4m | 1'4" | 0.5m | 1'8" |
| Ground Clearance (Stowed) | 68mm | 3" | 68mm | 3" |

PRODUCTIVITY

| | | | | |
|----------------------------------|-------------------|---------|-------------------|---------|
| Max. Platform Occupancy | 1 (in) / 0 (out) | | 1 (in) / 1 (out) | |
| Platform Capacity | 230kg | 507 lbs | 200kg | 441 lbs |
| Platform Capacity-Extension Deck | 113kg | 249 lbs | 113kg | 249 lbs |
| Drive Mode | Front wheel drive | | Rear wheels drive | |
| Drive speed (Stowed) | 4km/h | 2.5mph | 4km/h | 2.5mph |
| Drive speed (Raised) | 0.5km/h | 0.31mph | 0.5km/h | 0.31mph |
| Gradeability | 25% | | 25% | |
| Tire size | 323x100mm | 13"x4" | 250x80mm | 10"x3" |

POWER

| | | |
|--------------|-----------|-----------|
| Power Source | 24V 145Ah | 24V 145Ah |
|--------------|-----------|-----------|

HYDRAULIC SYSTEM

| | | | | |
|------------------------|------|--------|------|---------|
| Hydraulic Oil Capacity | 5.5L | 1.5gal | 4.5L | 1.2 gal |
|------------------------|------|--------|------|---------|

WEIGHT

| | | | | |
|----------------|-------|-----------|---------|-----------|
| Machine Weight | 840kg | 1,852 lbs | 1,150kg | 2,535 lbs |
|----------------|-------|-----------|---------|-----------|

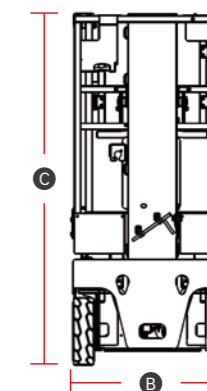
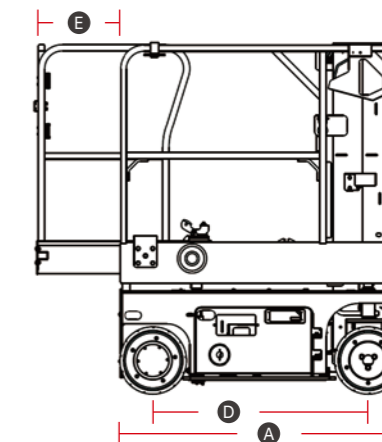
STANDARD FEATURES

- Proportional controls
- Horn/Hour meter
- Emergency stop device
- Emergency descent
- Charging protection system
- Descent alarm with flashing beacon
- Pothole guard
- Full-height drive
- Tilt alarm
- Platform tool box
- Telematics connector

OPTIONS

- AC power to platform
- Telematics
- Biodegradable hydraulic oil

MACHINE SIZE





M0810JE/M1012JE

LGMG's vertical mast lifts with a jib are designed to offer excellent barrier-crossing capability, allowing them to reach difficult areas in tight or confined spaces.

- Indoor and outdoor use, adaptable to diverse job sites.
- Compact size, easy to operate and transport.
- Equipped with a maintenance free AC drive motor to improve efficiency.
- Intelligent self-diagnostic system for quick troubleshooting.
- GPS installation for machine positioning and data access.

SPECIFICATIONS

| MODELS | M0810JE | | M1012JE | |
|----------------------------------|-------------------|-----------|-------------------|------------|
| | Metric | Imperial | Metric | Imperial |
| Measurements | | | | |
| Working Height Max. | 10m | 32'10" | 12.5m | 41' |
| Platform Height (Raised) | 8m | 26'3" | 10.5m | 34'5" |
| Horizontal Outreach | 3.2m | 10'6" | 5.55m | 18'3" |
| Up and Over Clearance Max. | 6.6m | 21'8" | 7m | 23' |
| Platform Size (LxW) | 0.98x0.72m | 39"x28" | 0.76x1.17m | 30"x46" |
| A Overall Length | 2.6m | 8'6" | 3.73m | 12'3" |
| B Overall Width | 1m | 3'3" | 1.2m | 3'11" |
| C Overall Height (Stowed) | 1.99m | 6'6" | 1.99m | 6'6" |
| D Wheelbase | 1.2m | 3'11" | 1.61m | 5'3" |
| E Ground Clearance | 0.1m | 4" | 0.1m | 4" |
| PRODUCTIVITY | | | | |
| Max. Platform Occupancy | 2 (in) / 1 (out) | | 2 (in) / 2 (out) | |
| Platform Capacity | 200kg | 440 lbs | 200kg | 440 lbs |
| Drive Mode | Rear wheels drive | | Rear wheels drive | |
| Turntable Rotation | 345° | | 345° | |
| Max. Drive Speed (Stowed) | 3.5km/h | 2.2mph | 5.5km/h | 3.4mph |
| Max. Drive Speed (Raised) | 0.43km/h | 0.27mph | 0.75km/h | 0.47mph |
| Gradeability | 25% | | 25% | |
| Tire Size | 380x130mm | 15"x5" | 457x178mm | 18"x7" |
| POWER | | | | |
| Power Source | 24V 250Ah | | 48V 260Ah | |
| HYDRAULIC SYSTEM | | | | |
| Hydraulic Oil Capacity | 6.5L | 1.7gal | 17L | 4.5gal |
| WEIGHT | | | | |
| Machine Weight | 2,720kg | 5,997 lbs | 4,900kg | 10,803 lbs |

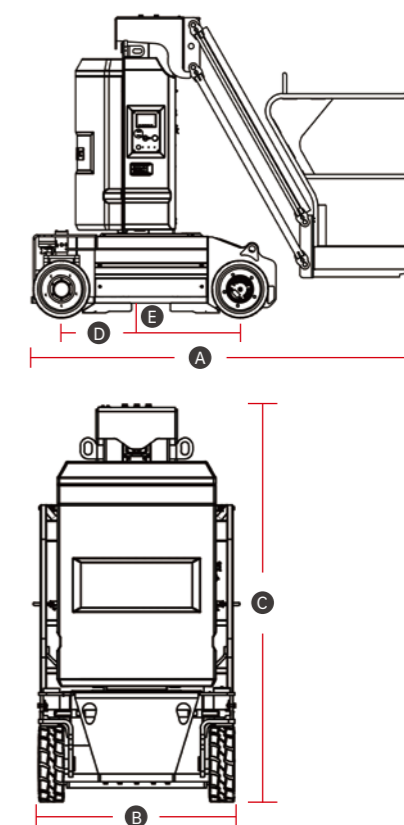
STANDARD FEATURES

- Proportional controls
- Horn/Hour meter
- Emergency stop device
- Full-height drive
- All motions alarm
- Charge protection system
- Manual emergency pump
- Brake release
- Emergency descent
- Tilt alarm
- Descent alarm with flashing beacon
- Telematics connector
- Solid non-marking tires

OPTIONS

- AC power to platform
- Telematics
- Anti-collision protection
- Biodegradable hydraulic oil

MACHINE SIZE





ARTICULATING BOOM LIFTS



BETTER PERFORMANCE HIGHER PRODUCTIVITY

Better Performance, and Higher Productivity

- The articulated boom lifts are available in both diesel-driven and battery-powered models, offering robust power and exceptional productivity.
- The four-wheel-drive system provides outstanding rough terrain capability, smooth transmission, and comfortable driving.

Innovative Design, and More Comfortable Operations

- Machines feature a large platform, a dual capacity design, large chassis tilt angle, and better adaptability to various working conditions.
- Proportional lift and drive controls deliver smoother maneuvering, precise positioning and comfortable operation.

Improved Safety, and Streamlined Maintenance


- Remote software upgrades, parameter adjustments, and remote online diagnosis through telematics.
- Equipped with the intelligent self-diagnosis function, which facilitates convenient fault detection when the equipment arrives at or departs from the site.




Articulating Boom Lifts

Articulating Boom Lifts


SPECIFICATIONS

| MODELS | The  Series | | | | | |
|--------------------------------|--|------------|-------------------------|------------|-------------------|------------|
| | A09JE-2 | | AR11JE-2 | | A13JE-2 | |
| Measurements | Metric | Imperial | Metric | Imperial | Metric | Imperial |
| Work Height Max. | 11m | 36'1" | 12.75m | 41'10" | 15m | 49'3" |
| Platform Height Max. | 9m | 29'6" | 10.75m | 35'3" | 13m | 42'8" |
| Horizontal Outreach | 6.25m | 20'6" | 6.78m | 22'3" | 7.46m | 24'6" |
| Up and Over Height | 4.12m | 13'6" | 5.32m | 17'5" | 7.1m | 23'4" |
| Platform Length | 1.17m | 3'10" | 1.42m | 4'8" | 1.2m | 3'11" |
| Platform Width | 0.76m | 2'6" | 0.76m | 2'6" | 0.9m | 2'11" |
| A Stowed Length | 5.5m | 18'1" | 5.77m | 18'11" | 6.7m | 22' |
| Transport Length (jib tucked) | 3.62m | 11'11" | 4.46m | 14'8" | 5.354m | 17'7" |
| B Overall Width | 1.19m | 3'11" | 1.85m | 6'1" | 1.5m | 4'11" |
| C Stowed Height | 2m | 6'7" | 2m | 6'7" | 1.98m | 6'6" |
| Transport Height | 2.52m | 8'3" | 2.29m | 7'6" | 2.11m | 6'11" |
| D Wheelbase | 1.65m | 5'5" | 1.88m | 6'2" | 2.03m | 6'8" |
| E Ground Clearance | 0.09m | 3.5" | 0.19m | 7.5" | 0.2m | 7.9" |
| PRODUCTIVITY | | | | | | |
| Platform Capacity | 230kg | 507 lbs | 270kg | 595 lbs | 200kg | 440 lbs |
| Platform Capacity (restricted) | / | | / | | / | |
| Max. Platform Occupancy | 2 | | 2 | | 2 | |
| Turntable Rotation | 355° | 355° | 355° | 355° | 355° | 355° |
| Drive Speed-Stowed | 5km/h | 3.1mph | 5km/h | 3.1mph | 5km/h | 3.1mph |
| Drive Speed-Raised | 0.8km/h | 0.5mph | 0.8km/h | 0.5mph | 0.8km/h | 0.5mph |
| Gradeability | 35% | 35% | 45% | 45% | 30% | 30% |
| Max. Wind Speed | 12.5m/s | 28mph | 12.5m/s | 28mph | 12.5m/s | 28mph |
| Turning Radius-Inside | 1.67m | 5'6" | 2.6m | 8'6" | 2.87m | 9'5" |
| Turning Radius-Outside | 3.38m | 11'1" | 4.7m | 15'5" | 4.2m | 13'9" |
| Max. Slope | 3°/4.5° | 3°/4.5° | 3°/4.5° | 3°/4.5° | 3°/3° | 3°/3° |
| Tire Type | Solid Non-marking | | Foam-filled Non-marking | | Solid Non-marking | |
| Tire Models | 22x7 | | 10-16.5 | | 600x190 | |
| Ground Pressure, Tyres | 730 kPa | 106 psi | 289 kPa | 41.9 psi | 1584.7 kPa | 229.8 psi |
| POWER | | | | | | |
| Power Source | 48V 260Ah | | 80V 125Ah | | 48V 260Ah | |
| HYDRAULIC SYSTEM | | | | | | |
| Hydraulic Oil Volume | 15L | 4gal | 16L | 4.2gal | 25L | 6.6gal |
| WEIGHT | | | | | | |
| Machine Weight | 6,700kg | 14,771 lbs | 5,350kg | 11,795 lbs | 7,160kg | 15,785 lbs |

SPECIFICATIONS

| MODELS | The  Series | | | | | | | |
|----------------------------------|--|------------|-------------------------------|------------|-----------|------------|-------------|------------|
| | A14JE-2 | | AR14JE-2 | | A16JE-2 | | AR16JE-2 | |
| Measurements | Metric | Imperial | Metric | Imperial | Metric | Imperial | Metric | Imperial |
| Work Height Max. | 16m | 52'6" | 15.9m | 52'2" | 17.7m | 58'1" | 17.9m | 58'9" |
| Platform Height Max. | 14m | 45'11" | 13.9m | 45'7" | 15.7m | 51'6" | 15.9m | 52'2" |
| Horizontal Outreach | 7.73m | 25'4" | 7.7m | 25'3" | 9.49m | 31'2" | 9.4m | 30'10" |
| Up and Over Height | 7.26m | 23'10" | 7.5m | 24'7" | 7.26m | 23'10" | 7.4m | 24'3" |
| Platform Length | 1.83m | 6' | 1.83m | 6' | 1.83m | 6' | 1.83m | 6' |
| Platform Width | 0.76m | 2'6" | 0.76m | 2'6" | 0.76m | 2'6" | 0.76m | 2'6" |
| A Stowed Length | 6.66m | 21'10" | 6.95m | 22'10" | 7.407m | 24'4" | 7.56m | 24'10" |
| Transport Length (jib tucked) | 5.577m | 18'4" | 5.9m | 19'4" | 5.99m | 19'8" | 5.95m | 19'6" |
| B Overall Width | 1.8m | 5'11" | 2.3m | 7'7" | 1.87m | 6'2" | 2.3m | 7'7" |
| C Stowed Height | 1.96m | 6'5" | 2.24m | 7'4" | 1.96m | 6'5" | 2.26m | 7'5" |
| Transport Height | 2.486m | 8'2" | 2.65m | 8'8" | 2.42m | 7'11" | 2.68m | 8'10" |
| D Wheelbase | 2.03m | 6'8" | 2.25m | 7'5" | 2.03m | 6'8" | 2.25m | 7'5" |
| E Ground Clearance | 0.19m | 7.5" | 0.33m | 1'1" | 0.18m | 7.1" | 0.35m | 1'2" |
| PRODUCTIVITY | | | | | | | | |
| Platform Capacity (unrestricted) | 230kg | 507 lbs | 300kg | 661 lbs | 230kg | 507 lbs | 250kg | 551 lbs |
| Platform Capacity (restricted) | / | | 450kg | 992 lbs | 350kg | 772 lbs | 350kg | 772 lbs |
| Max. Platform Occupancy | 2 | | 2(unrestricted)/3(restricted) | | | | | |
| Turntable Rotation | 355° | 355° | 355° | 355° | 355° | 355° | 355° | 355° |
| Drive Speed-Stowed | 5km/h | 3.1mph | 5km/h | 3.1mph | 5km/h | 3.1mph | 5km/h | 3.1mph |
| Drive Speed-Raised | 0.8km/h | 0.5mph | 0.8km/h | 0.5mph | 0.8km/h | 0.5mph | 0.8km/h | 0.5mph |
| Gradeability | 30% | 30% | 45% | 45% | 30% | 30% | 45% | 45% |
| Max. Wind Speed | 12.5m/s | 28mph | 12.5m/s | 28mph | 12.5m/s | 28mph | 12.5m/s | 28mph |
| Turning Radius-Inside | 2.14m | 7' | 2.9m | 9'6" | 2.22m | 7'3" | 2.9m | 9'6" |
| Turning Radius-Outside | 4.3m | 14'1" | 5.7m | 18'8" | 4.6m | 15'1" | 5.7m | 18'8" |
| Max. Slope | 5°/5° | 5°/5° | 5°/5° | 5°/5° | 4.5°/4.5° | 4.5°/4.5° | 5°/5° | 5°/5° |
| Tire Type | Solid | | Foam-filled | | Solid | | Foam-filled | |
| Tire Models | 240/55D17.5 | | 315/55D20 | | 250-15 | | 315/55D20 | |
| Ground Pressure, Tyres | 409.8 kPa | 59.4 psi | 595 kPa | 86.3 psi | 1160 kPa | 168.2 psi | 610 kPa | 88.47 psi |
| POWER | | | | | | | | |
| Power Source | 80V 125Ah | | 80V 173Ah | | 80V 125Ah | | 80V 173Ah | |
| HYDRAULIC SYSTEM | | | | | | | | |
| Hydraulic Oil Volume | 30L | 7.9gal | 57L | 15.1gal | 30L | 7.9gal | 60L | 15.9gal |
| WEIGHT | | | | | | | | |
| Machine Weight | 7,100kg | 15,653 lbs | 7,200kg | 15,873 lbs | 7,650kg | 16,865 lbs | 7,200kg | 15,873 lbs |

SPECIFICATIONS

| MODELS | The  Series | | | | | |
|----------------------------------|--|------------|-----------|------------|-------------|------------|
| | AR18JE-2 | | AR20JE-2 | | AR24JE | |
| Measurements | Metric | Imperial | Metric | Imperial | Metric | Imperial |
| Work Height Max. | 20.12m | 66' | 21.58m | 70'10" | 26.6m | 87'3" |
| Platform Height Max. | 18.12m | 59'5" | 19.58m | 64'3" | 24.6m | 80'9" |
| Horizontal Outreach | 10.8m | 35'5" | 11.87m | 38'11" | 18m | 59'1" |
| Up and Over Height | 7.7m | 25'3" | 8.19m | 26'10" | 8.83m | 28'11" |
| Platform Length | 1.83m | 6' | 2.44m | 8' | 2.44m | 8' |
| Platform Width | 0.76m | 2'6" | 0.9m | 2'11" | 0.9m | 2'11" |
| A Stowed Length | 8.42m | 27'7" | 9.42m | 30'11" | 11.6m | 36'1" |
| Transport Length (jib tucked) | 6.415m | 21'1" | 7.625m | 25' | 11.6m | 36'1" |
| B Overall Width | 2.5m | 8'2" | 2.5m | 8'2" | 2.5m | 8'2" |
| C Stowed Height | 2.47m | 8'1" | 2.46m | 8'1" | 2.83m | 9'3" |
| Transport Height | 3.07m | 10'1" | 2.96m | 9'9" | 2.83m | 9'3" |
| D Wheelbase | 2.51m | 8'3" | 2.51m | 8'3" | 2.85m | 9'4" |
| E Ground Clearance | 0.4m | 1'4" | 0.4m | 1'4" | 0.4m | 1'4" |
| PRODUCTIVITY | | | | | | |
| Platform Capacity (unrestricted) | 260kg | 573 lbs | 260kg | 573 lbs | 250kg | 551 lbs |
| Platform Capacity (restricted) | 350kg | | 772 lbs | | 350kg | 772 lbs |
| Max. Platform Occupancy | 2(unrestricted)/3(restricted) | | | | | |
| Turntable Rotation | 360° | 360° | 360° | 360° | 360° | 360° |
| Drive Speed-Stowed | 5km/h | 3.1mph | 5km/h | 3.1mph | 5km/h | 3.1mph |
| Drive Speed-Raised | 0.8km/h | 0.5mph | 0.8km/h | 0.5mph | 0.8km/h | 0.5mph |
| Gradeability | 45% | 45% | 45% | 45% | 45% | 45% |
| Max. Wind Speed | 12.5m/s | 28mph | 12.5m/s | 28mph | 12.5m/s | 28mph |
| Turning Radius-Inside | 3.5m | 11'6" | 3.5m | 11'6" | 2.04m | 6'8" |
| Turning Radius-Outside | 6.35m | 20'10" | 6.35m | 20'10" | 4.13m | 13'7" |
| Max. Slope | 4°/4° | 4°/4° | 4°/4° | 4°/4° | 4°/4° | 4°/4° |
| Tire Type | Solid | | Solid | | Foam-filled | |
| Tire Models | 36×14-20 | | 36×14-20 | | 15-625 | |
| Ground Pressure, Tyres | 448.3 kPa | 65 psi | 519.8 kPa | 75.4 psi | 970.8 kPa | 140.8 psi |
| POWER | | | | | | |
| Power Source | 80V 173Ah | | 80V 228Ah | | 80V 460Ah | |
| HYDRAULIC SYSTEM | | | | | | |
| Hydraulic Oil Volume | 90L | 23.8gal | 90L | 23.8gal | 105L | 27.7gal |
| WEIGHT | | | | | | |
| Machine Weight | 7,800kg | 17,196 lbs | 9,100kg | 20,062 lbs | 17,300kg | 38,139 lbs |

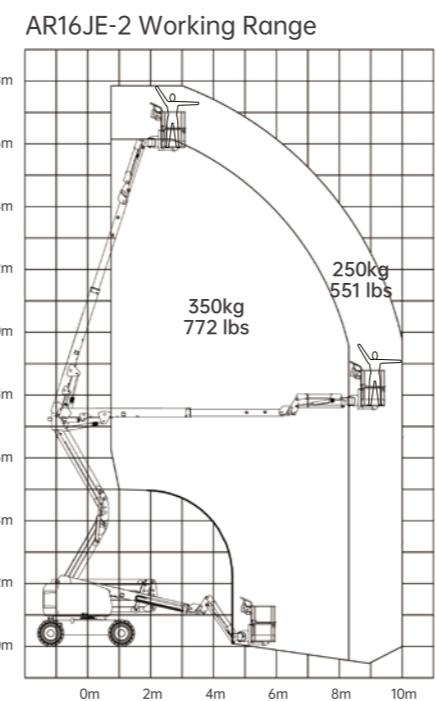
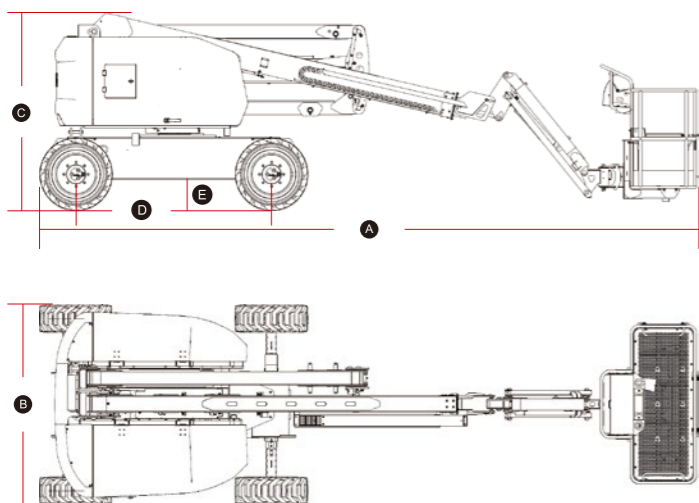
STANDARD FEATURES

| | |
|------------------------------------|-------------------------------------|
| Auto-leveling platform | Emergency stop button |
| Hydraulic rotating platform 180° | Intelligent self-diagnosis function |
| Full proportional joystick control | Cylinder bellows |
| Descent alarm | OTA remote upgrade |
| Flashing beacons | Dustproof components |
| Horn/Hour meter | Over-head anti-collision protection |
| Over-tilt protection system | Platform tool box |
| AC power to platform | |

OPTIONAL

| | |
|---------------------------|------------------------------|
| Platform work light | Platform auxiliary guardrail |
| Half-height mesh platform | Platform pipe rack |

MACHINE SIZE






SPECIFICATIONS

| MODELS | The 2 Series | | | | | |
|----------------------------------|-------------------------|------------|-------------------------------|------------|----------------------|------------|
| | AR11J | | AR14J-2 | | AR16J-2 | |
| Measurements | Metric | Imperial | Metric | Imperial | Metric | Imperial |
| Work Height Max. | 12.75m | 41'10" | 15.9m | 52'2" | 17.9m | 58'9" |
| Platform Height Max. | 10.75m | 35'3" | 13.9m | 45'7" | 15.9m | 52'2" |
| Horizontal Outreach | 6.78m | 22'3" | 7.7m | 25'3" | 9.81m | 32'2" |
| Up and Over Height | 5.32m | 17'5" | 7.5m | 24'7" | 7.5m | 24'7" |
| Platform Length | 1.42m | 4'8" | 1.83m | 6' | 1.83m | 6' |
| Platform Width | 0.76m | 2'6" | 0.76m | 2'6" | 0.76m | 2'6" |
| A Stowed Length | 5.77m | 18'11" | 6.95m | 22'10" | 7.91m | 25'11" |
| Transport Length (jib tucked) | 4.46m | 14'8" | 5.9m | 19'4" | 6.406m | 21' |
| B Overall Width | 1.85m | 6'1" | 2.3m | 7'7" | 2.3m | 7'7" |
| C Stowed Height | 2.06m | 6'9" | 2.24m | 7'4" | 2.24m | 7'4" |
| Transport Height | 2.29m | 7'6" | 2.65m | 8'8" | 2.76m | 9'1" |
| D Wheelbase | 1.88m | 6'2" | 2.25m | 7'5" | 2.25m | 7'5" |
| E Ground Clearance | 0.19m | 7" | 0.33m | 1'1" | 0.33m | 1'1" |
| PRODUCTIVITY | | | | | | |
| Platform Capacity (unrestricted) | 270kg | 595 lbs | 300kg | 661 lbs | 260kg | 573 lbs |
| Platform Capacity (restricted) | / | | 450kg | 992 lbs | 450kg | 992 lbs |
| Max. Platform Occupancy | 2 | | 2(unrestricted)/3(restricted) | | | |
| Turntable Rotation | 355° | 355° | 355° | 355° | 355° | 355° |
| Drive Speed-Stowed | 5km/h | 3.1mph | 5km/h | 3.1mph | 5km/h | 3.1mph |
| Drive Speed-Raised | 0.8km/h | 0.5mph | 0.8km/h | 0.5mph | 0.8km/h | 0.5mph |
| Gradeability | 45% | 45% | 45% | 45% | 45% | 45% |
| Max. Wind Speed | 12.5m/s | 28mph | 12.5m/s | 28mph | 12.5m/s | 28mph |
| Turning Radius-Inside | 2.6m | 8'6" | 2.9m | 9'6" | 2.9m | 9'6" |
| Turning Radius-Outside | 4.7m | 15'5" | 5.7m | 18'8" | 5.7m | 18'8" |
| Max. Slope | 3°/4.5° | 3°/4.5° | 5°/5° | 5°/5° | 5°/5° | 5°/5° |
| Tire Type | Foam-filled non-marking | | Foam-filled | | Foam-filled | |
| Tire Models | 10-16.5 | | 315/55D20 | | 315/55D20 | |
| Ground Pressure, Tyres | 289 kPa | 41.9 psi | 431.8 kPa | 62.6 psi | 438 kPa | 63.5 psi |
| POWER | | | | | | |
| Power Source | Kubota 18.2kW/24.4hp | | Kubota 18.2kW/24.4hp | | Kubota 18.2kW/24.4hp | |
| Fuel Tank Capacity | 45L | 11.9gal | 65L | 17.2gal | 65L | 17.2gal |
| HYDRAULIC SYSTEM | | | | | | |
| Hydraulic Oil Volume | 58L | 15.3gal | 60L | 15.9gal | 60L | 15.9gal |
| WEIGHT | | | | | | |
| Machine Weight | 5,400kg | 11,905 lbs | 7,400kg | 16,314 lbs | 8,650kg | 19,070 lbs |

SPECIFICATIONS

| MODELS | The  Series | | | | | |
|----------------------------------|--|------------|--------------------|------------|--------------------|------------|
| | AR18J-2 | | AR20J-2 | | AR24J | |
| | Metric | Imperial | Metric | Imperial | Metric | Imperial |
| Measurements | | | | | | |
| Work Height Max. | 20.12m | 66' | 21.58m | 70'10" | 26.6m | 87'3" |
| Platform Height Max. | 18.12m | 59'5" | 19.58m | 64'3" | 24.6m | 80'9" |
| Horizontal Outreach | 10.8m | 35'5" | 11.87m | 38'11" | 18m | 59'1" |
| Up and Over Height | 7.7m | 25'3" | 8.19m | 26'10" | 8.83m | 28'11" |
| Platform Length | 1.83m | 6' | 2.44m | 8' | 2.44m | 8' |
| Platform Width | 0.76m | 2'6" | 0.9m | 2'11" | 0.9m | 2'11" |
| A Stowed Length | 8.42m | 27'7" | 9.42m | 30'11" | 11.6m | 36'1" |
| Transport Length (jib tucked) | 6.415m | 21'1" | 7.625m | 25' | 11.6m | 36'1" |
| B Overall Width | 2.5m | 8'2" | 2.5m | 8'2" | 2.5m | 8'2" |
| C Stowed Height | 2.47m | 8'1" | 2.46m | 8'1" | 2.83m | 9'3" |
| Transport Height | 3.07m | 10'1" | 2.96m | 9'9" | 2.83m | 9'3" |
| D Wheelbase | 2.51m | 8'3" | 2.51m | 8'3" | 2.85m | 9'4" |
| E Ground Clearance | 0.4m | 1'4" | 0.4m | 1'4" | 0.4m | 1'4" |
| PRODUCTIVITY | | | | | | |
| Platform Capacity (unrestricted) | 260kg | 573 lbs | 260kg | 573 lbs | 250kg | 551 lbs |
| Platform Capacity (restricted) | 350kg | 772 lbs | 350kg | 772 lbs | 350kg | 772 lbs |
| Max. Platform Occupancy | 2(unrestricted)/3(restricted) | | | | | |
| Turntable Rotation | 360° | 360° | 360° | 360° | 360° | 360° |
| Drive Speed-Stowed | 5km/h | 3.1mph | 5km/h | 3.1mph | 5km/h | 3.1mph |
| Drive Speed-Raised | 0.8km/h | 0.5mph | 0.8km/h | 0.5mph | 0.8km/h | 0.5mph |
| Gradeability | 45% | 45% | 45% | 45% | 45% | 45% |
| Max. Wind Speed | 12.5m/s | 28mph | 12.5m/s | 28mph | 12.5m/s | 28mph |
| Turning Radius-Inside | 3.5m | 11'6" | 3.5m | 11'6" | 2.04m | 6'8" |
| Turning Radius-Outside | 6.35m | 20'10" | 6.35m | 20'10" | 4.13m | 13'7" |
| Max. Slope | 4°/4° | 4°/4° | 4°/4° | 4°/4° | 5°/5° | 5°/5° |
| Tire Type | Solid | | Solid | | Foam-filled | |
| Tire Models | 36×14-20 | | 36×14-20 | | 15-625 | |
| Ground Pressure, Tyres | 453.7 kPa | 65.8 psi | 530.7 kPa | 77 psi | 970.8 kPa | 140.8 psi |
| POWER | | | | | | |
| Power Source | Kubota 18.2kW/24.4hp | | Kubota 25kW/33.5hp | | Kubota 36kW/48.3hp | |
| Fuel Tank Capacity | 60L | 15.9gal | 60L | 15.9gal | 100L | 26.4gal |
| HYDRAULIC SYSTEM | | | | | | |
| Hydraulic Oil Volume | 110L | 29.1gal | 110L | 29.1gal | 162L | 42.8gal |
| WEIGHT | | | | | | |
| Machine Weight | 7,900kg | 17,417 lbs | 9,300kg | 20,503 lbs | 17,300kg | 38,139 lbs |

STANDARD FEATURES

Auto-leveling platform

Hydraulic rotating platform 180°

Full proportional joystick control

Descent alarm

Flashing beacons

Horn/Hour meter

Over-tilt protection system

AC power to platform

Emergency stop button

Intelligent self-diagnosis function

Cylinder bellows

OTA remote upgrade

Dustproof components

Over-head anti-collision protection

Platform tool box

OPTIONAL

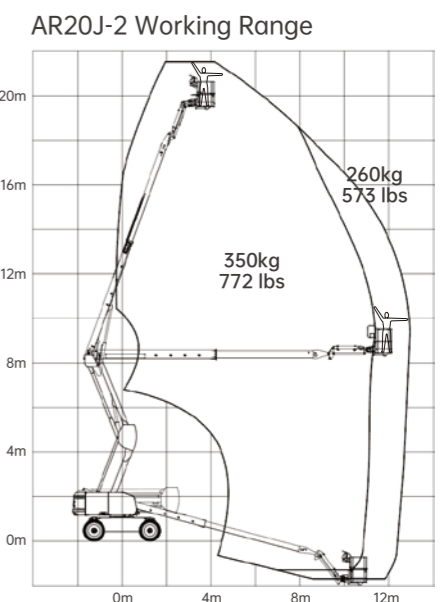
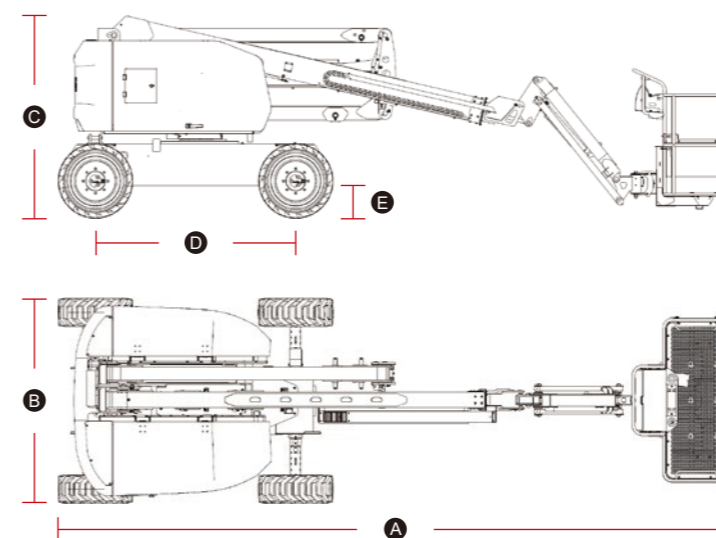
Platform work light

Half-height mesh platform

Platform auxiliary guardrail

Platform pipe rack

MACHINE SIZE



SPECIFICATIONS

The **2** Series

| MODELS | AR32J-2 | | AR42J-2 | |
|---|-------------------------------|-------------|----------------------|-------------|
| | Metric | Imperial | Metric | Imperial |
| Measurements | | | | |
| Work Height Max. | 34.2m | 112'2" | 44.1m | 144'8" |
| Platform Height Max. | 32.2m | 105'8" | 42.1m | 138'1" |
| Horizontal Outreach | 20.43m | 67' | 22.5m | 73'10" |
| Up and Over Height | 14.46m | 47'5" | 19m | 62'4" |
| Platform Length | 2.44m | 8' | 2.44m | 8' |
| Platform Width | 0.9m | 2'11" | 0.9m | 2'11" |
| A Stowed Length | 12.7m | 41'8" | 11.62m | 38'1" |
| Transport Length (jib tucked) | 12.7m | 41'8" | 11.62m | 38'1" |
| B Overall Width (axles retracted/axles extended) | 2.37m/2.97m | 7'9"/9'9" | 2.4m/4m | 7'10"/13'1" |
| C Stowed Height | 2.81m | 9'3" | 2.85m | 9'4" |
| Transport Height | 2.81m | 9'3" | 2.85m | 9'4" |
| D Wheelbase (axles retracted/axles extended) | 4.16/4.07m | 13'8"/13'4" | 4.16/4.07m | 13'8"/13'4" |
| E Ground Clearance | 0.31m | 1' | 0.335m | 1'1" |
| PRODUCTIVITY | | | | |
| Platform Capacity (unrestricted) | 260kg | 573 lbs | 270kg | 595 lbs |
| Platform Capacity (restricted) | 350kg | 772 lbs | 450kg | 992 lbs |
| Max. Platform Occupancy | 2(unrestricted)/3(restricted) | | | |
| Turntable Rotation | 360° | 360° | 360° | 360° |
| Drive Speed-Stowed | 5km/h | 3.1mph | 5km/h | 3.1mph |
| Drive Speed-Raised | 0.6km/h | 0.5mph | 0.6km/h | 0.5mph |
| Gradeability | 45% | 45% | 45% | 45% |
| Max. Wind Speed | 12.5m/s | 28mph | 12.5m/s | 28mph |
| Turning Radius-Inside (axles retracted/axles extended) | 6.6m/2.6m | 21'8"/8'6" | 6.9m/2.6m | 22'8"/8'6" |
| Turning Radius-Outside (axles retracted/axles extended) | 9m/6.2m | 29'6"/20'4" | 9.3m/6.2m | 30'6"/20'4" |
| Max. Slope | 5°/5° | 5°/5° | 5°/5° | 5°/5° |
| Tire Type | Foam-filled | | Foam-filled | |
| Tire Models | 385/45-28 | | 445/50D 710 | |
| Ground Pressure, Tyres | 1095kPa | 158.8psi | 1307kPa | 189.6psi |
| POWER | | | | |
| Power Source | Kubota 54.6kW/73.2hp | | Kubota 54.6kW/73.2hp | |
| Fuel Tank Capacity | 100L | 26.4gal | 140L | 36.98gal |
| HYDRAULIC SYSTEM | | | | |
| Hydraulic Oil Volume | 200L | 52.8gal | 230L | 60.8gal |
| WEIGHT | | | | |
| Machine Weight | 18,900kg | 41,667 lbs | 23,800kg | 52,470 lbs |

STANDARD FEATURES

Auto-leveling platform

Hydraulic rotating platform 180°

Full proportional joystick control

Descent alarm

Flashing beacons

Horn/Hour meter

Over-tilt protection system

AC power to platform

Emergency stop button

Intelligent self-diagnosis function

Cylinder bellows

OTA remote upgrade

Dustproof components

Over-head anti-collision protection

Platform tool box

OPTIONAL

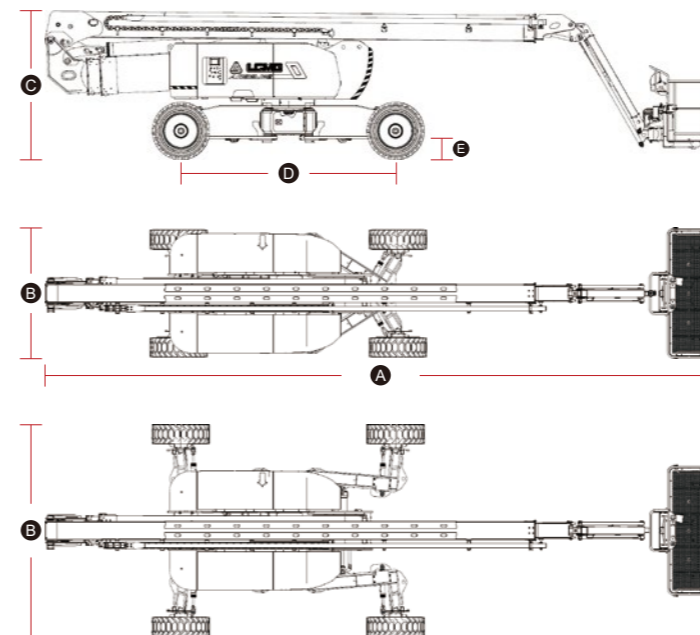
Platform work light

Half-height mesh platform

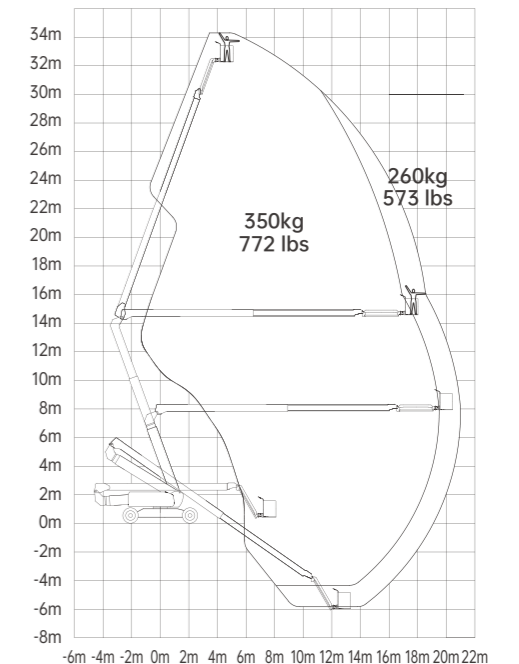
Platform auxiliary guardrail

Platform pipe rack

MACHINE SIZE



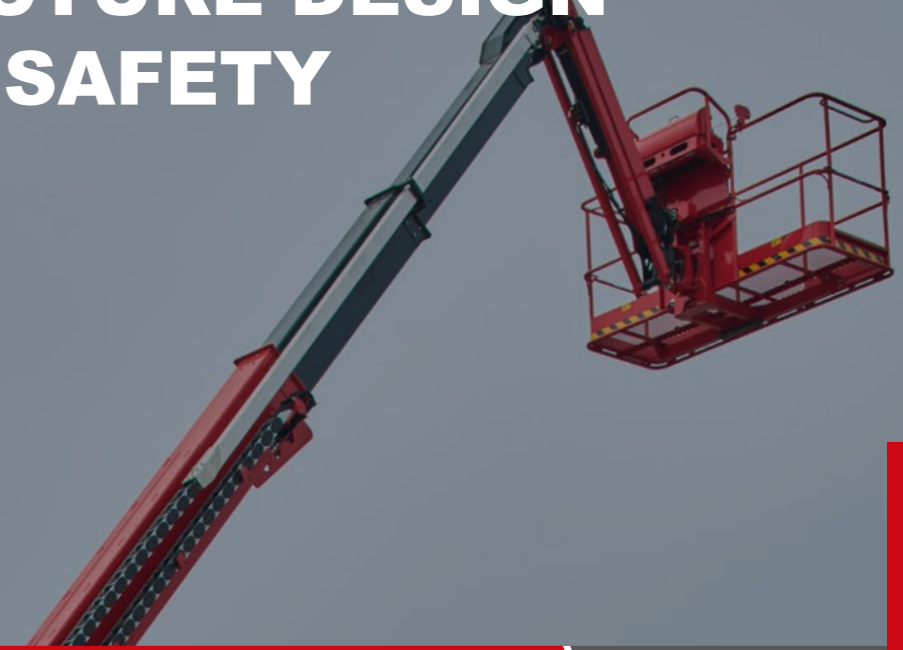
AR32J-2 Working Range



LGMG TELESCOPIC BOOM LIFTS



NEW STRUCTURE DESIGN IMPROVED SAFETY



Better Performance, and Higher Productivity

- The -2 series telescopic boom lifts are available in both diesel-driven and battery-powered models, offering robust power and exceptional productivity.
- Models up to 28 meters are equipped with the full-time active oscillating axles, combined with a four-wheel-drive system, providing outstanding off-road capability, smooth transmission, and comfortable driving.


New Structure Design, and More Efficient Transportation

- Models up to 28 meters working height include a new parallelogram tower boom design with high rigidity and anti-torque, featuring the function of "Up and Over Height", which provides an impressive reach and excellent obstacle-surmounting ability.
- Models over 34 meters working height are equipped with an expandable axle structure for compact transportation and work in confined areas.
- Lightweight and compact, the new structure design reduces stowed and transportation dimensions, making it easy to transport via container and trailer, thereby lowering logistics costs.


Improved Safety, and Streamlined Maintenance

- The dual power source design, featuring a backup battery for straightforward lifting and lowering movements, effectively addresses emergency situations. Combined with multiple safety protections, it ensures operators to work safely and efficiently.
- Remote software upgrades, parameter adjustments, and remote online diagnosis through telematics.
- The intelligent self-diagnosis function enables quick troubleshooting at the working site.

SPECIFICATIONS

| MODELS | The  Series | | | | | |
|----------------------------------|---|------------|-----------|------------|-----------|------------|
| | T14JE-2 | | T16JE-2 | | T18JE-2 | |
| Measurements | Metric | Imperial | Metric | Imperial | Metric | Imperial |
| Work Height Max. | 16.3m | 53'6" | 18.3m | 60' | 20.6m | 67'7" |
| Platform Height Max. | 14.3m | 46'11" | 16.3m | 53'6" | 18.6m | 61' |
| Horizontal Outreach | 9.06m | 29'9" | 11.3m | 37'1" | 12.74m | 41'10" |
| Platform Length | 2.44m | 8' | 2.44m | 8' | 2.44m | 8' |
| Platform Width | 0.9m | 2'11" | 0.9m | 2'11" | 0.9m | 2'11" |
| A Stowed Length | 7.94m | 26'1" | 9.18m | 30'1" | 10.09m | 33'1" |
| Transport Length (jib tucked) | 5.651m | 18'6" | 6.876m | 22'7" | 7.79m | 25'7" |
| B Overall Width | 2.42m | 7'11" | 2.42m | 7'11" | 2.5m | 8'2" |
| C Stowed Height | 2.65m | 8'8" | 2.65m | 8'8" | 2.62m | 8'7" |
| Transport Height | 3.097m | 10'2" | 3.024m | 9'11" | 3.06m | 10' |
| D Wheelbase | 2.4m | 7'10" | 2.4m | 7'10" | 2.51m | 8'3" |
| E Ground Clearance | 0.37m | 1'3" | 0.37m | 1'3" | 0.37m | 1'3" |
| PRODUCTIVITY | | | | | | |
| Platform Capacity (unrestricted) | 300kg | 661 lbs | 300kg | 661 lbs | 300kg | 661 lbs |
| Platform Capacity (restricted) | 450kg | 992 lbs | 450kg | 992 lbs | 450kg | 992 lbs |
| Max. Platform Occupancy | 2(unrestricted)/3(restricted) | | | | | |
| Turntable Rotation | 360° | 360° | 360° | 360° | 360° | 360° |
| Drive Speed-Stowed | 5km/h | 3.1mph | 5km/h | 3.1mph | 5km/h | 3.1mph |
| Drive Speed-Raised | 0.8km/h | 0.5mph | 0.8km/h | 0.5mph | 0.8km/h | 0.5mph |
| Gradeability | 45% | 45% | 45% | 45% | 45% | 45% |
| Max. Wind Speed | 12.5m/s | 28mph | 12.5m/s | 28mph | 12.5m/s | 28mph |
| Turning Radius-Inside | 3m | 9'10" | 3m | 9'10" | 3.15m | 10'4" |
| Turning Radius-Outside | 5.8m | 19' | 5.8m | 19' | 6.2m | 20'4" |
| Max. Slope | 5°/5° | 5°/5° | 5°/5° | 5°/5° | 5°/5° | 5°/5° |
| Tire Type | Solid | | Solid | | Solid | |
| Tire Models | 33x12-20 | | 33x12-20 | | 33x12-20 | |
| Ground Pressure, Tyres | 393.2 kPa | 57 psi | 431.7 kPa | 62.6 psi | 481.2 kPa | 69.8 psi |
| POWER | | | | | | |
| Lithium Battery | 80V 125Ah | | 80V 125Ah | | 80V 173Ah | |
| HYDRAULIC SYSTEM | | | | | | |
| Hydraulic Oil Volume | 80L | 21.1gal | 80L | 21.1gal | 90L | 23.8gal |
| WEIGHT | | | | | | |
| Machine Weight | 6,700kg | 14,771 lbs | 7,400kg | 16,314 lbs | 8,300kg | 18,298 lbs |

SPECIFICATIONS

| MODELS | The  Series | | | | | | | |
|----------------------------------|--|------------|-----------|------------|-------------|------------|-------------|------------|
| | T20JE-2 | | T22JE-2 | | T26JE-2 | | T28JE-2 | |
| Measurements | Metric | Imperial | Metric | Imperial | Metric | Imperial | Metric | Imperial |
| Work Height Max. | 22m | 72'2" | 24.2m | 79'5" | 28.2m | 92'6" | 30.2m | 99'1" |
| Platform Height Max. | 20m | 65'7" | 22.2m | 72'10" | 26.2m | 85'11" | 28.2m | 92'6" |
| Horizontal Outreach | 13.62m | 44'8" | 15.47m | 50'9" | 20m | 65'7" | 21.42m | 70'3" |
| Platform Length | 2.44m | 8' | 2.44m | 8' | 2.44m | 8' | 2.44m | 8' |
| Platform Width | 0.9m | 2'11" | 0.9m | 2'11" | 0.9m | 2'11" | 0.9m | 2'11" |
| A Stowed Length | 10.685m | 35'1" | 9.86m | 32'4" | 11.62m | 38'1" | 12.63m | 41'5" |
| Transport Length (jib tucked) | 8.385m | 27'6" | 7.56m | 24'10" | 9.409m | 30'10" | 10.361m | 34' |
| B Overall Width | 2.5m | 8'2" | 2.5m | 8'2" | 2.5m | 8'2" | 2.5m | 8'2" |
| C Stowed Height | 2.68m | 8'10" | 2.76m | 9'1" | 2.83m | 9'3" | 2.83m | 9'3" |
| Transport Height | 3m | 9'10" | 3m | 9'10" | 3.1m | 10'2" | 3.13m | 10'3" |
| D Wheelbase | 2.51m | 8'3" | 2.51m | 8'3" | 2.85m | 9'4" | 2.85m | 9'4" |
| E Ground Clearance | 0.4m | 1'4" | 0.4m | 1'4" | 0.4m | 1'4" | 0.4m | 1'4" |
| PRODUCTIVITY | | | | | | | | |
| Platform Capacity (unrestricted) | 300kg | 661 lbs | 300kg | 661 lbs | 300kg | 661 lbs | 300kg | 661 lbs |
| Platform Capacity (restricted) | 450kg | 992 lbs | 450kg | 992 lbs | 450kg | 992 lbs | 450kg | 992 lbs |
| Max. Platform Occupancy | 2(unrestricted)/3(restricted) | | | | | | | |
| Turntable Rotation | 360° | 360° | 360° | 360° | 360° | 360° | 360° | 360° |
| Drive Speed-Stowed | 5km/h | 3.1mph | 5km/h | 3.1mph | 5km/h | 3.1mph | 5km/h | 3.1mph |
| Drive Speed-Raised | 0.8km/h | 0.5mph | 0.8km/h | 0.5mph | 0.8km/h | 0.5mph | 0.8km/h | 0.5mph |
| Gradeability | 45% | 45% | 45% | 45% | 45% | 45% | 45% | 45% |
| Max. Wind Speed | 12.5m/s | 28mph | 12.5m/s | 28mph | 12.5m/s | 28mph | 12.5m/s | 28mph |
| Turning Radius-Inside | 3.5m | 11'6" | 3.5m | 11'6" | 4m | 13'1" | 4m | 13'1" |
| Turning Radius-Outside | 6.35m | 20'10" | 6.35m | 20'10" | 7.15m | 23'5" | 7.15m | 23'5" |
| Max. Slope | 5°/5° | 5°/5° | 5°/5° | 5°/5° | 5°/5° | 5°/5° | 5°/5° | 5°/5° |
| Tire Type | Solid | | Solid | | Foam-filled | | Foam-filled | |
| Tire Models | 36x14-20 | | 36x14-20 | | 15-625 | | 15-625 | |
| Ground Pressure, Tyres | 541.8 kPa | 78.6 psi | 618.8 kPa | 89.8 psi | 860.7 kPa | 124.8 psi | 932.2 kPa | 135.2 psi |
| POWER | | | | | | | | |
| Lithium Battery | 80V 228Ah | | 80V 228Ah | | 80V 304Ah | | 80V 375Ah | |
| HYDRAULIC SYSTEM | | | | | | | | |
| Hydraulic Oil Volume | 90L | 23.8gal | 90L | 23.8gal | 115L | 30.4gal | 115L | 30.4gal |
| WEIGHT | | | | | | | | |
| Machine Weight | 9,400kg | 20,723 lbs | 10,800kg | 23,810 lbs | 15,200kg | 33,510 lbs | 16,500kg | 36,376 lbs |

SPECIFICATIONS

| MODELS | The 2 Series | | | | | |
|----------------------------------|-------------------------------|------------|----------------------|------------|----------------------|------------|
| | T14J-2 | | T16J-2 | | T18J-2 | |
| Measurements | Metric | Imperial | Metric | Imperial | Metric | Imperial |
| Work Height Max. | 16.3m | 53'6" | 18.3m | 60' | 20.6m | 67'7" |
| Platform Height Max. | 14.3m | 46'11" | 16.3m | 53'6" | 18.6m | 61' |
| Horizontal Outreach | 9.06m | 29'9" | 11.3m | 37'1" | 12.74m | 41'10" |
| Platform Length | 2.44m | 8' | 2.44m | 8' | 2.44m | 8' |
| Platform Width | 0.9m | 2'11" | 0.9m | 2'11" | 0.9m | 2'11" |
| A Stowed Length | 7.94m | 26'1" | 9.18m | 30'1" | 10.09m | 33'1" |
| Transport Length (jib tucked) | 5.651m | 18'6" | 6.876m | 22'7" | 7.79m | 25'7" |
| B Overall Width | 2.42m | 7'11" | 2.42m | 7'11" | 2.5m | 8'2" |
| C Stowed Height | 2.65m | 8'8" | 2.65m | 8'8" | 2.62m | 8'7" |
| Transport Height | 3.097m | 10'2" | 3.024m | 9'11" | 3.06m | 10' |
| D Wheelbase | 2.4m | 7'10" | 2.4m | 7'10" | 2.51m | 8'3" |
| E Ground Clearance | 0.37m | 1'3" | 0.37m | 1'3" | 0.37m | 1'3" |
| PRODUCTIVITY | | | | | | |
| Platform Capacity (unrestricted) | 300kg | 661 lbs | 300kg | 661 lbs | 300kg | 661 lbs |
| Platform Capacity (restricted) | 450kg | 992 lbs | 450kg | 992 lbs | 450kg | 992 lbs |
| Max. Platform Occupancy | 2(unrestricted)/3(restricted) | | | | | |
| Turntable Rotation | 360° | 360° | 360° | 360° | 360° | 360° |
| Drive Speed-Stowed | 4km/h | 2.5mph | 4km/h | 2.5mph | 4km/h | 2.5mph |
| Drive Speed-Raised | 0.8km/h | 0.5mph | 0.8km/h | 0.5mph | 0.8km/h | 0.5mph |
| Gradeability | 45% | 45% | 45% | 45% | 45% | 45% |
| Max. Wind Speed | 12.5m/s | 28mph | 12.5m/s | 28mph | 12.5m/s | 28mph |
| Turning Radius-Inside | 3m | 9'10" | 3m | 9'10" | 3.15m | 10'4" |
| Turning Radius-Outside | 5.8m | 19' | 5.8m | 19' | 6.2m | 20'4" |
| Max. Slope | 5°/5° | 5°/5° | 5°/5° | 5°/5° | 5°/5° | 5°/5° |
| Tire Type | Solid | | Solid | | Solid | |
| Tire Models | 33x12-20 | | 33x12-20 | | 33x12-20 | |
| Ground Pressure, Tyres | 393.2 kPa | 57 psi | 431.7 kPa | 62.6 psi | 481.2 kPa | 69.8 psi |
| POWER | | | | | | |
| Power Source | Kubota 18.2kW/24.4hp | | Kubota 18.2kW/24.4hp | | Kubota 18.2kW/24.4hp | |
| Fuel Tank Capacity | 65L | 17.2gal | 65L | 17.2gal | 65L | 17.2gal |
| HYDRAULIC SYSTEM | | | | | | |
| Hydraulic Oil Volume | 100L | 26.4gal | 100L | 26.4gal | 110L | 29.1gal |
| WEIGHT | | | | | | |
| Machine Weight | 6,700kg | 14,771 lbs | 7,300kg | 16,094 lbs | 8,300kg | 18,298 lbs |

SPECIFICATIONS

| MODELS | The 2 Series | | | | | | | |
|----------------------------------|-------------------------------|------------|--------------------|------------|--------------------|------------|--------------------|------------|
| | T20J-2 | | T22J-2 | | T26J-2 | | T28J-2 | |
| Measurements | Metric | Imperial | Metric | Imperial | Metric | Imperial | Metric | Imperial |
| Work Height Max. | 22m | 72'2" | 24.2m | 79'5" | 28.2m | 92'6" | 30.2m | 99'1" |
| Platform Height Max. | 20m | 65'7" | 22.2m | 72'10" | 26.2m | 85'11" | 28.2m | 92'6" |
| Horizontal Outreach | 13.62m | 44'8" | 15.47m | 50'9" | 20m | 65'7" | 21.42m | 70'3" |
| Platform Length | 2.44m | 8' | 2.44m | 8' | 2.44m | 8' | 2.44m | 8' |
| Platform Width | 0.9m | 2'11" | 0.9m | 2'11" | 0.9m | 2'11" | 0.9m | 2'11" |
| A Stowed Length | 10.685m | 35'1" | 9.86m | 32'4" | 11.62m | 38'1" | 12.63m | 41'5" |
| Transport Length (jib tucked) | 8.385m | 27'6" | 7.56m | 24'10" | 9.409m | 30'10" | 10.361m | 34' |
| B Overall Width | 2.5m | 8'2" | 2.5m | 8'2" | 2.5m | 8'2" | 2.5m | 8'2" |
| C Stowed Height | 2.68m | 8'10" | 2.76m | 9'1" | 2.83m | 9'3" | 2.83m | 9'3" |
| Transport Height | 3m | 9'10" | 3m | 9'10" | 3.1m | 10'2" | 3.13m | 10'3" |
| D Wheelbase | 2.51m | 8'3" | 2.51m | 8'3" | 2.85m | 9'4" | 2.85m | 9'4" |
| E Ground Clearance | 0.4m | 1'4" | 0.4m | 1'4" | 0.4m | 1'4" | 0.4m | 1'4" |
| PRODUCTIVITY | | | | | | | | |
| Platform Capacity (unrestricted) | 300kg | 661 lbs | 300kg | 661 lbs | 300kg | 661 lbs | 300kg | 661 lbs |
| Platform Capacity (restricted) | 450kg | 992 lbs | 450kg | 992 lbs | 450kg | 992 lbs | 450kg | 992 lbs |
| Max. Platform Occupancy | 2(unrestricted)/3(restricted) | | | | | | | |
| Turntable Rotation | 360° | 360° | 360° | 360° | 360° | 360° | 360° | 360° |
| Drive Speed-Stowed | 5km/h | 3.1mph | 5km/h | 3.1mph | 5km/h | 3.1mph | 5km/h | 3.1mph |
| Drive Speed-Raised | 0.8km/h | 0.5mph | 0.8km/h | 0.5mph | 0.8km/h | 0.5mph | 0.8km/h | 0.5mph |
| Gradeability | 45% | 45% | 45% | 45% | 45% | 45% | 45% | 45% |
| Max. Wind Speed | 12.5m/s | 28mph | 12.5m/s | 28mph | 12.5m/s | 28mph | 12.5m/s | 28mph |
| Turning Radius-Inside | 3.5m | 11'6" | 3.5m | 11'6" | 4m | 13'1" | 4m | 13'1" |
| Turning Radius-Outside | 6.35m | 20'10" | 6.35m | 20'10" | 7.15m | 23'5" | 7.15m | 23'5" |
| Max. Slope | 5°/5° | 5°/5° | 5°/5° | 5°/5° | 5°/5° | 5°/5° | 5°/5° | 5°/5° |
| Tire Type | Solid | | Solid | | Foam-filled | | Foam-filled | |
| Tire Models | 36x14-20 | | 36x14-20 | | 15-625 | | 15-625 | |
| Ground Pressure, Tyres | 541.8 kPa | 78.6 psi | 618.8 kPa | 89.8 psi | 860.7 kPa | 124.8 psi | 932.2 kPa | 135.2 psi |
| POWER | | | | | | | | |
| Power Source | Kubota 25kW/33.5hp | | Kubota 25kW/33.5hp | | Kubota 36kW/48.3hp | | Kubota 36kW/48.3hp | |
| Fuel Tank Capacity | 100L | 26.4gal | 100L | 26.4gal | 100L | 26.4gal | 100L | 26.4gal |
| HYDRAULIC SYSTEM | | | | | | | | |
| Hydraulic Oil Volume | 120L | 31.7gal | 120L | 31.7gal | 150L | 39.6gal | 125L | 33gal |
| WEIGHT | | | | | | | | |
| Machine Weight | 9,650kg | 21,275 lbs | 11,060kg | 24,383 lbs | 15,200kg | 33,510 lbs | 16,500kg | 36,376 lbs |

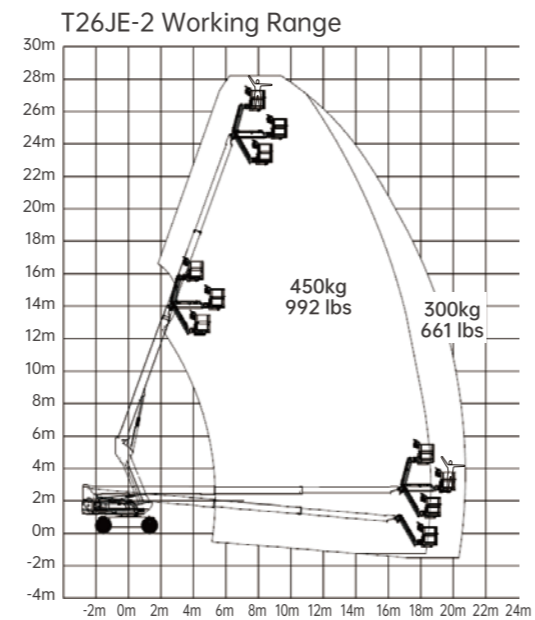
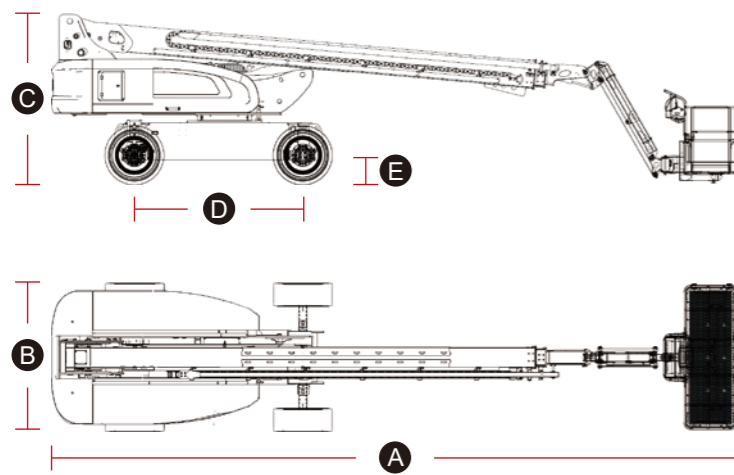
STANDARD FEATURES

| | |
|-------------------------------------|-------------------------------------|
| OTA remote upgrade | Emergency stop button |
| Intelligent self-diagnosis function | Descent alarm |
| Auto-leveling platform | Flashing beacons |
| Hydraulic rotating platform 180° | Horn/Hour meter |
| Full proportional joystick control | Dual load 300kg/450kg |
| Load sensitive system | Over-head anti-collision protection |
| Over-tilt protection system | Full-time active oscillating axles |
| AC power to platform | |

OPTIONAL

| | |
|------------------------------|---------------------------|
| Platform work light | Half-height mesh platform |
| Platform auxiliary guardrail | Platform pipe rack |

MACHINE SIZE





**34-42m
MODELS**

**Expandable
Axles
Structure**

SPECIFICATIONS

The **2** Series

| MODELS | T34JE-2 | | T38JE-2 | | T42JE-2 | |
|---|------------|-------------|------------|-------------|------------|-------------|
| | Metric | Imperial | Metric | Imperial | Metric | Imperial |
| Work Height Max. | 36.2m | 118'9" | 40.2m | 131'11" | 44.15m | 144'10" |
| Platform Height Max. | 34.2m | 112'2" | 38.2m | 125'4" | 42.15m | 138'3" |
| Horizontal Outreach | 21.7m | 71'2" | 22.3m | 73'2" | 24.5m | 80'5" |
| Platform Length | 2.44m | 8' | 2.44m | 8' | 2.44m | 8' |
| Platform Width | 0.9m | 2'11" | 0.9m | 2'11" | 0.9m | 2'11" |
| A Stowed Length | 13.1m | 43' | 14.313m | 47' | 11.92m | 39'1" |
| Transport Length (jib tucked) | 11.296m | 37'1" | 12m | 39'4" | 11.92m | 39'1" |
| B Overall Width (axles retracted) | 2.44m | 8' | 2.44m | 8' | 2.44m | 8' |
| C Overall Width (axles extended) | 4.04m | 13'3" | 4.04m | 13'3" | 4.04m | 13'3" |
| D Stowed Height | 2.74m | 9' | 2.74m | 9' | 2.8m | 9'2" |
| Transport Height | 2.83m | 9'3" | 3.15m | 10'4" | 2.8m | 9'2" |
| E Wheelbase (axles retracted/axles extended) | 4.16/4.07m | 13'8"/13'4" | 4.16/4.07m | 13'8"/13'4" | 4.16/4.07m | 13'8"/13'4" |
| F Ground Clearance | 0.34m | 1'1" | 0.34m | 1'1" | 0.34m | 1'1" |

PRODUCTIVITY

| | | | | | | |
|--|-------------------------------|---------|-------------|---------|-------------|-----------|
| Platform Capacity (unrestricted) | 300kg | 661 lbs | 300kg | 661 lbs | 300kg | 661 lbs |
| Platform Capacity (restricted) | 450kg | 992 lbs | 450kg | 992 lbs | 450kg | 992 lbs |
| Max. Platform Occupancy | 2(unrestricted)/3(restricted) | | | | | |
| Turntable Rotation | 360° | 360° | 360° | 360° | 360° | 360° |
| Drive Speed-Stowed | 5km/h | 3.1mph | 5km/h | 3.1mph | 5km/h | 3.1mph |
| Drive Speed-Raised | 0.6km/h | 0.37mph | 0.6km/h | 0.37mph | 0.6km/h | 0.37mph |
| Gradeability | 45% | 45% | 45% | 45% | 45% | 45% |
| Max. Wind Speed | 12.5m/s | 28mph | 12.5m/s | 28mph | 12.5m/s | 28mph |
| Turning Radius-Inside (axles retracted) | 6.6m | 21'8" | 6.6m | 21'8" | 6.9m | 22'8" |
| Turning Radius-Outside (axles retracted) | 9m | 29'6" | 9m | 29'6" | 9.3m | 30'6" |
| Turning Radius-Inside (axles extended) | 2.6m | 8'6" | 2.6m | 8'6" | 2.6m | 8'6" |
| Turning Radius-Outside (axles extended) | 6.2m | 20'4" | 6.2m | 20'4" | 6.2m | 20'4" |
| Max. Slope | 5°/5° | 5°/5° | 5°/5° | 5°/5° | 5°/5° | 5°/5° |
| Tire Type | Foam-filled | | Foam-filled | | Foam-filled | |
| Tire Models | 445/50D 710 | | 445/50D 710 | | 445/50D 710 | |
| Ground Pressure, Tyres | 992.8 kPa | 144 psi | 1075.3 kPa | 156 psi | 1258.1 kPa | 182.5 psi |

POWER

| | | | | | | |
|-----------------|-----------|--|-----------|--|-----------|--|
| Lithium Battery | 80V 560Ah | | 80V 560Ah | | 80V 608Ah | |
|-----------------|-----------|--|-----------|--|-----------|--|

HYDRAULIC SYSTEM

| | | | | | | |
|----------------------|------|---------|------|---------|------|---------|
| Hydraulic Oil Volume | 180L | 47.6gal | 180L | 47.6gal | 220L | 58.1gal |
|----------------------|------|---------|------|---------|------|---------|

WEIGHT

| | | | | | | |
|----------------|-----------|------------|-----------|------------|----------|------------|
| Machine Weight | 17,600 kg | 38,801 lbs | 19,100 kg | 42,108 lbs | 22,300kg | 49,163 lbs |
|----------------|-----------|------------|-----------|------------|----------|------------|

SPECIFICATIONS

| MODELS | The 2 Series | | | | | |
|---|----------------------|-------------|-------------------------------|-------------|----------------------|-------------|
| | T34J-2 | | T38J-2 | | T42J-2 | |
| Measurements | Metric | Imperial | Metric | Imperial | Metric | Imperial |
| Work Height Max. | 36.2m | 118'9" | 40.2m | 131'11" | 44.15m | 144'10" |
| Platform Height Max. | 34.2m | 112'2" | 38.2m | 125'4" | 42.15m | 138'3" |
| Horizontal Outreach | 21.7m | 71'2" | 22.3m | 73'2" | 24.5m | 80'5" |
| Platform Length | 2.44m | 8' | 2.44m | 8' | 2.3m | 7'7" |
| Platform Width | 0.9m | 2'11" | 0.9m | 2'11" | 0.9m | 2'11" |
| A Stowed Length | 13.1m | 43' | 14.313m | 46'11" | 11.92m | 39'1" |
| Transport Length (jib tucked) | 11.296m | 37'1" | 12m | 39'4" | 11.92m | 39'1" |
| B Overall Width (axles retracted) | 2.4m | 7'10" | 2.4m | 7'10" | 2.4m | 7'10" |
| C Overall Width (axles extended) | 4m | 13'1" | 4m | 13'1" | 4m | 13'1" |
| D Stowed Height | 2.74m | 9' | 2.74m | 9' | 2.8m | 9'2" |
| Transport Height | 2.83m | 9'3" | 3.15m | 10'4" | 2.8m | 9'2" |
| E Wheelbase (axles retracted/axles extended) | 4.16/4.07m | 13'8"/13'4" | 4.16/4.07m | 13'8"/13'4" | 4.16/4.07m | 13'8"/13'4" |
| F Ground Clearance | 0.34m | 1'1" | 0.34m | 1'1" | 0.34m | 1'1" |
| PRODUCTIVITY | | | | | | |
| Platform Capacity (unrestricted) | 300kg | 661 lbs | 300kg | 661 lbs | 300kg | 661 lbs |
| Platform Capacity (restricted) | 450kg | 992 lbs | 450kg | 992 lbs | 450kg | 992 lbs |
| Max. Platform Occupancy | | | 2(unrestricted)/3(restricted) | | | |
| Turntable Rotation | 360° | 360° | 360° | 360° | 360° | 360° |
| Drive Speed-Stowed | 5km/h | 3.1mph | 5km/h | 3.1mph | 5km/h | 3.1mph |
| Drive Speed-Raised | 0.6km/h | 0.37mph | 0.6km/h | 0.37mph | 0.6km/h | 0.37mph |
| Gradeability | 45% | 45% | 45% | 45% | 45% | 45% |
| Max. Wind Speed | 12.5m/s | 28mph | 12.5m/s | 28mph | 12.5m/s | 28mph |
| Turning Radius-Inside (axles retracted) | 6.6m | 21'8" | 6.6m | 21'8" | 6.9m | 22'8" |
| Turning Radius-Outside (axles retracted) | 9m | 29'6" | 9m | 29'6" | 9.3m | 30'6" |
| Turning Radius-Inside (axles extended) | 2.6m | 8'6" | 2.6m | 8'6" | 2.6m | 8'6" |
| Turning Radius-Outside (axles extended) | 6.2m | 20'4" | 6.2m | 20'4" | 6.2m | 20'4" |
| Max. Slope | 5°/5° | 5°/5° | 5°/5° | 5°/5° | 5°/5° | 5°/5° |
| Tire Type | Foam-filled | | Foam-filled | | Foam-filled | |
| Tire Models | 445/50D 710 | | 445/50D 710 | | 445/50D 710 | |
| Ground Pressure, Tyres | 992.8 kPa | 144 psi | 1075.3 kPa | 156 psi | 1258.1 kPa | 182.5 psi |
| POWER | | | | | | |
| Power Source | Kubota 54.6kW/73.2hp | | Kubota 54.6kW/73.2hp | | Kubota 54.6kW/73.2hp | |
| Fuel Tank Capacity | 150L | 39.6gal | 150L | 39.6gal | 150L | 39.6gal |
| HYDRAULIC SYSTEM | | | | | | |
| Hydraulic Oil Volume | 220L | 58.1gal | 220L | 58.1gal | 250L | 66gal |
| WEIGHT | | | | | | |
| Machine Weight | 17,600kg | 38,801 lbs | 19,100kg | 42,108 lbs | 22,300kg | 49,163 lbs |

STANDARD FEATURES

OTA remote upgrade

Intelligent self-diagnosis function

Auto-leveling platform

Hydraulic rotating platform 180°

Full proportional joystick control

Load sensitive system

Over-tilt protection system

Emergency stop button

Descent alarm

Flashing beacons

Horn/Hour meter

Dual load 300kg/450kg

Over-head anti-collision protection

AC power to platform

OPTIONAL

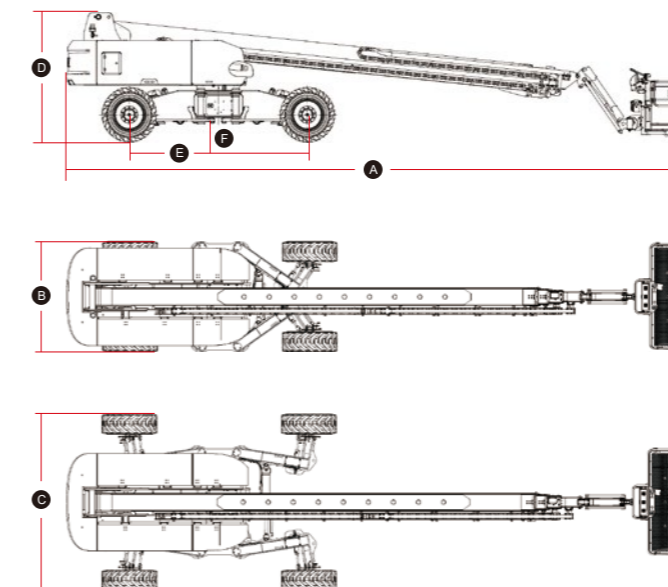
Platform work light

Platform auxiliary guardrail

Half-height mesh platform

Platform pipe rack

MACHINE SIZE



T38JE-2 Working Range

